

Ditre Italia Products

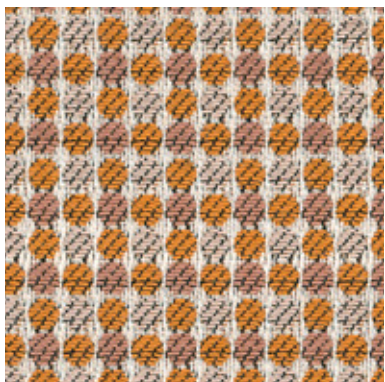
—

Tessuti ***Fabrics***

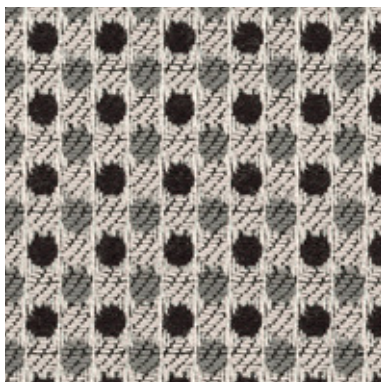
DITRE
italia

CAT. T

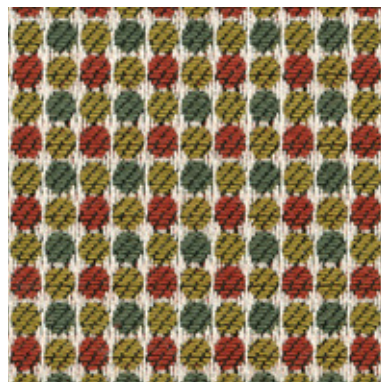
Twist



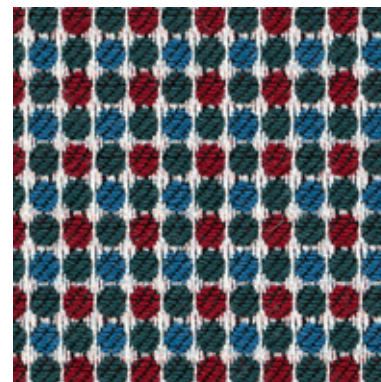
TWIST 05



TWIST 07



TWIST 09



TWIST 10



TWIST 11



TWIST 12

INFORMAZIONI TECNICHE / TECHNICAL INFORMATION

Composizione / composition	77% VI - 23% PL
Martindale / martindale	20.000 cicli/cycles
Pilling / Pilling	4

MANUTENZIONE / MAINTENANCE



CAT. T

Trend



TREND 001



TREND 002



TREND 003



TREND 004



TREND 010



TREND 011



TREND 033



TREND 034



TREND 035

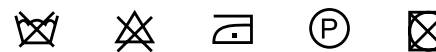


TREND 039

INFORMAZIONI TECNICHE / TECHNICAL INFORMATION

Composizione / composition	55% VI - 45% CO
Martindale / martindale	50.000 cicli/cycles
Pilling / Pilling	4

MANUTENZIONE / MAINTENANCE



CAT. T

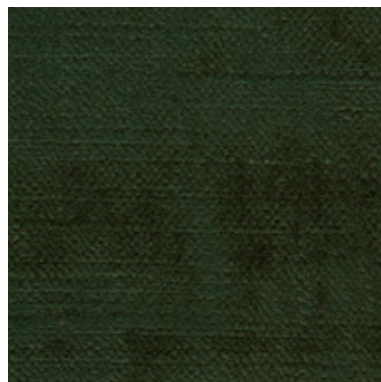
Trend



TREND 044



TREND 052



TREND 068



TREND 088



TREND 231



TREND 232



TREND 233

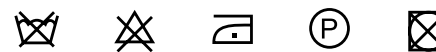


TREND 234

INFORMAZIONI TECNICHE / TECHNICAL INFORMATION

Composizione / composition	55% VI - 45% CO
Martindale / martindale	50.000 cicli/cycles
Pilling / Pilling	4

MANUTENZIONE / MAINTENANCE



CAT. T

Travel



TRAVEL 701



TRAVEL 702



TRAVEL 703



TRAVEL 705



TRAVEL 706

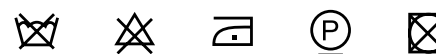


TRAVEL 707

INFORMAZIONI TECNICHE / TECHNICAL INFORMATION

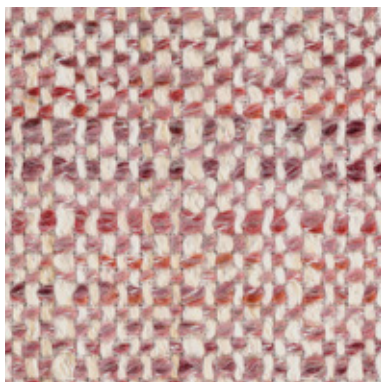
Composizione / composition	54% VI - 38% CO - 8% PL
Martindale / martindale	25.000 cicli/cycles
Pilling / Pilling	4

MANUTENZIONE / MAINTENANCE





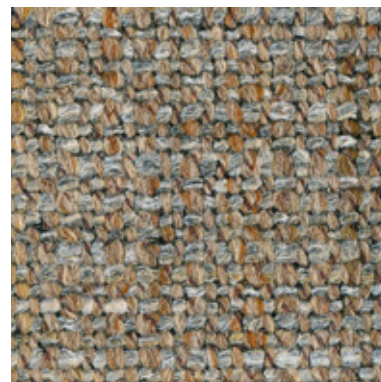
TIME 007



TIME 010



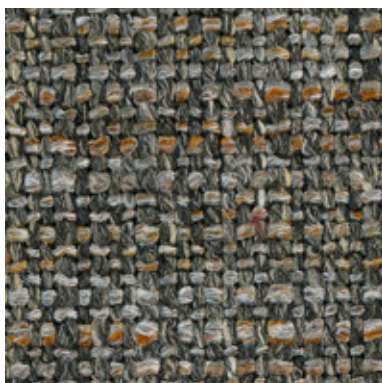
TIME 024



TIME 029



TIME 035



TIME 036

INFORMAZIONI TECNICHE / TECHNICAL INFORMATION

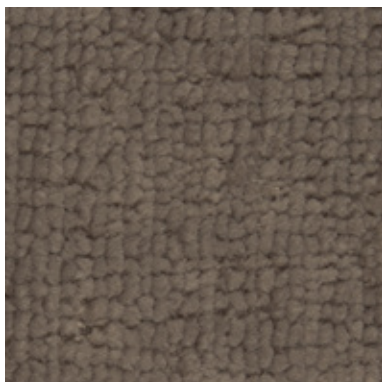
Composizione / composition	49% PC - 14% CO - 14% PL - 23% LI
Martindale / martindale	>35.000 cicli/cycles
Pilling / Pilling	4

MANUTENZIONE / MAINTENANCE

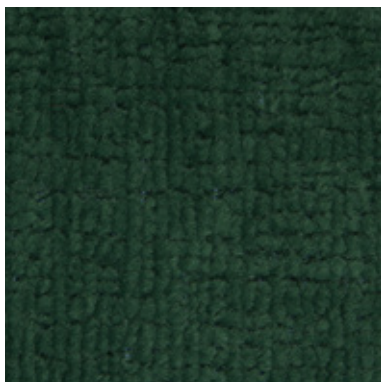


CAT. T

Texas



TEXAS 004



TEXAS 008



TEXAS 011



TEXAS 013



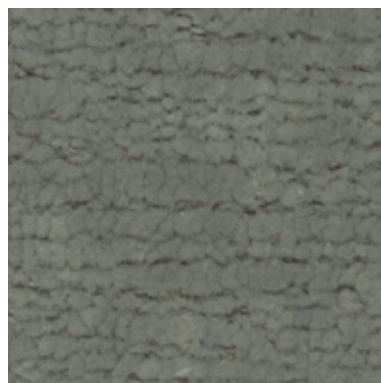
TEXAS 015



TEXAS 016



TEXAS 018



TEXAS 022



TEXAS 023



TEXAS 025

INFORMAZIONI TECNICHE / TECHNICAL INFORMATION

Composizione / composition	72 % RPET - 28% PL
Martindale / martindale	60.000 cicli/cycles
Pilling / Pilling	5

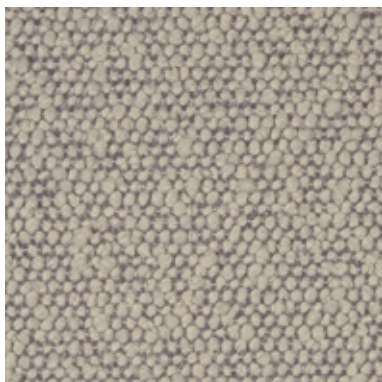


MANUTENZIONE / MAINTENANCE

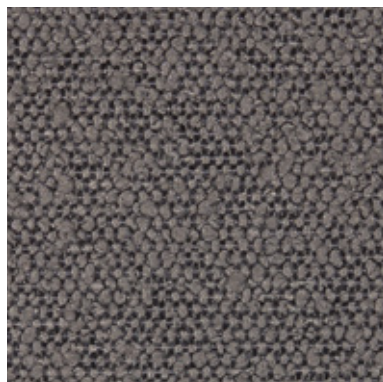


CAT. P

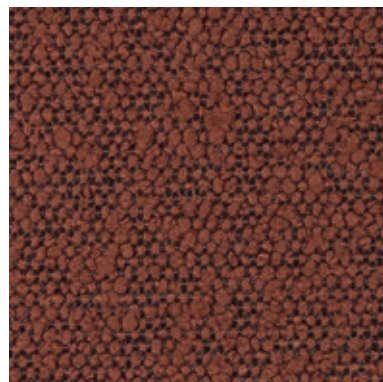
Princess



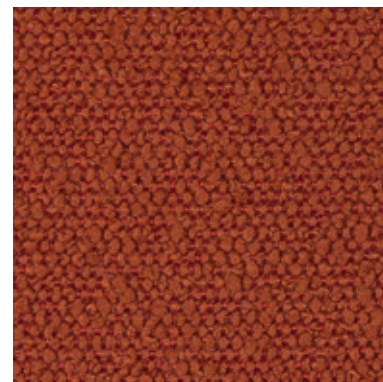
PRINCESS 901



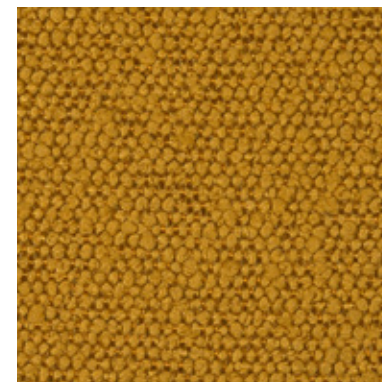
PRINCESS 101



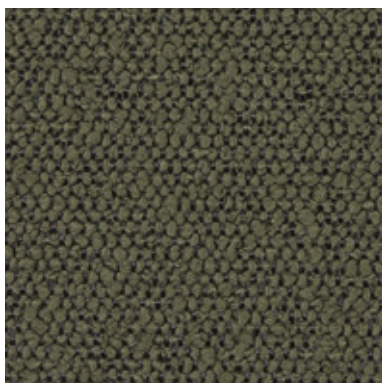
PRINCESS 300



PRINCESS 304



PRINCESS 400



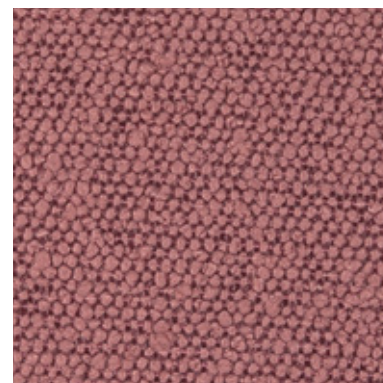
PRINCESS 502



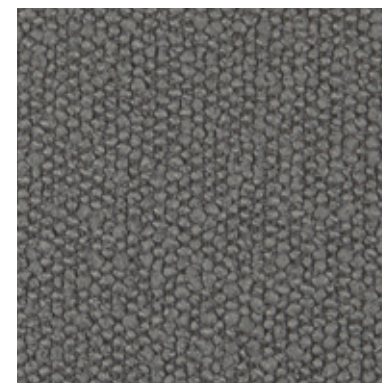
PRINCESS 600



PRINCESS 604



PRINCESS 705



PRINCESS 802

INFORMAZIONI TECNICHE / TECHNICAL INFORMATION

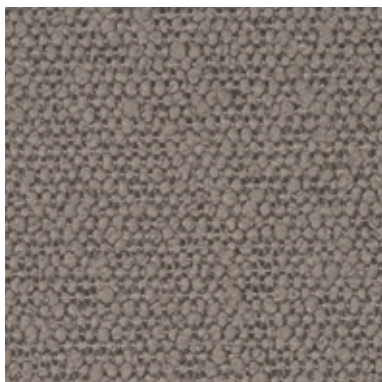
Composizione / composition	100% PLFR
Martindale / martindale	80.000 cicli/cycles
Pilling / Pilling	5

MANUTENZIONE / MAINTENANCE

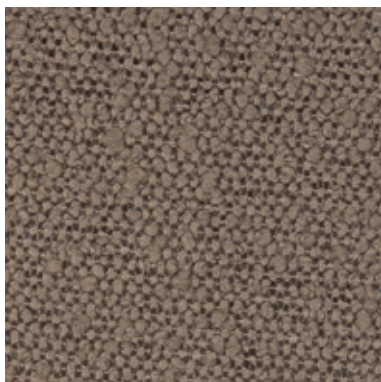


CAT. P

Princess



PRINCESS 803



PRINCESS 903

INFORMAZIONI TECNICHE / TECHNICAL INFORMATION

Composizione / composition	100% PLFR
Martindale / martindale	80.000 cicli/cycles
Pilling / Pilling	5

MANUTENZIONE / MAINTENANCE





POTTER 501



POTTER 503



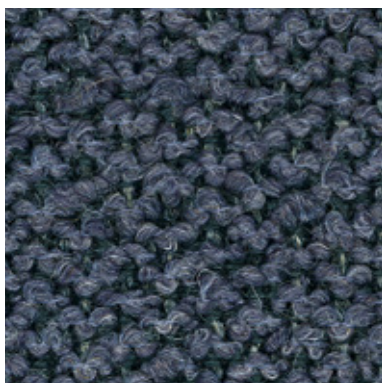
POTTER 509



POTTER 510



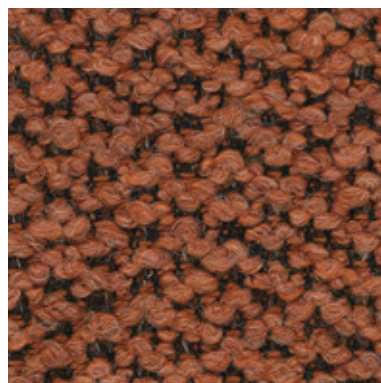
POTTER 512



POTTER 522



POTTER 524



POTTER 529



POTTER 530

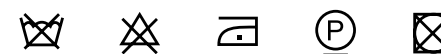


POTTER 539

INFORMAZIONI TECNICHE / TECHNICAL INFORMATION

Composizione / composition	34% PC - 24% CO - 14% WO - 12% VI - 12% PL - 4% LI
Martindale / martindale	30.000 cicli/cycles
Pilling / Pilling	4

MANUTENZIONE / MAINTENANCE



CAT. P

Potter



POTTER 540

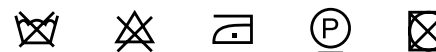


POTTER 543

INFORMAZIONI TECNICHE / TECHNICAL INFORMATION

Composizione / composition	34% PC - 24% CO - 14% WO - 12% VI - 12% PL - 4% LI
Martindale / martindale	30.000 cicli/cycles
Pilling / Pilling	4

MANUTENZIONE / MAINTENANCE



CAT. P

Post



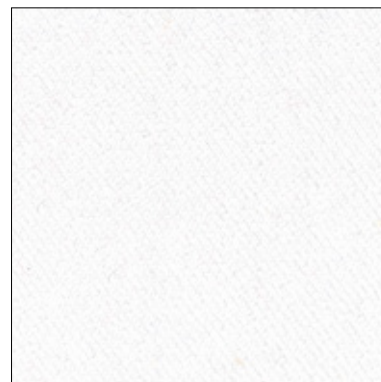
POST 055



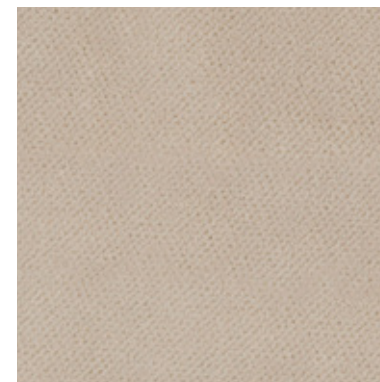
POST 058



POST 059



POST 061



POST 062



POST 071



POST 075



POST 076



POST 081



POST 086

INFORMAZIONI TECNICHE / TECHNICAL INFORMATION

Composizione / composition	100% PL
Martindale / martindale	60.000 cicli/cycles
Pilling / Pilling	5

MANUTENZIONE / MAINTENANCE



CAT. P

Post



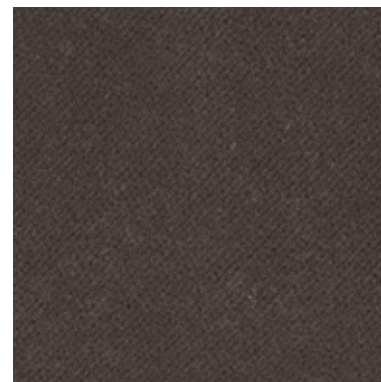
POST 089



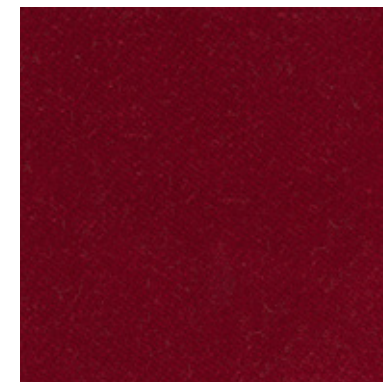
POST 093



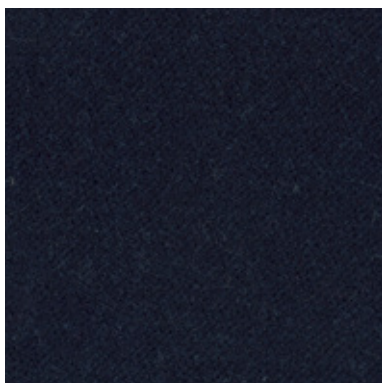
POST 094



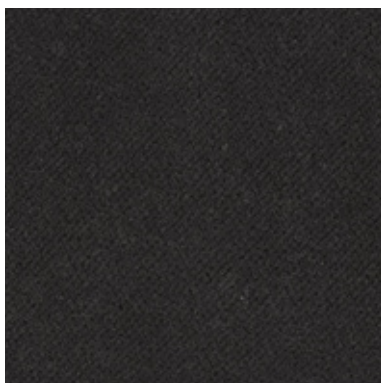
POST 096



POST 101



POST 203



POST 205



POST 208

INFORMAZIONI TECNICHE / TECHNICAL INFORMATION

Composizione / composition	100% PL
Martindale / martindale	60.000 cicli/cycles
Pilling / Pilling	5

MANUTENZIONE / MAINTENANCE



CAT. P

Positano



POSITANO 105



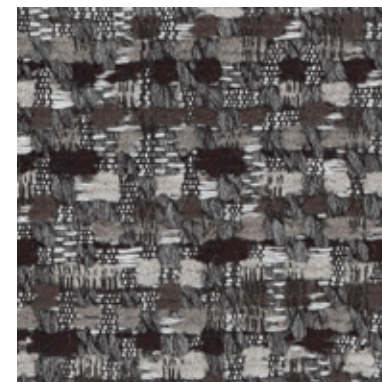
POSITANO 108



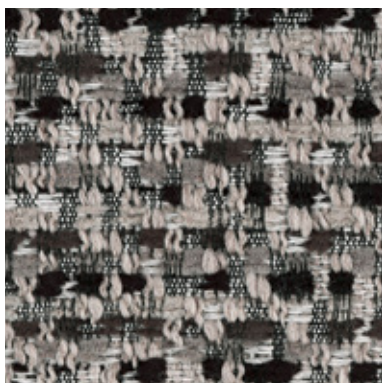
POSITANO 114



POSITANO 134



POSITANO 139



POSITANO 141

INFORMAZIONI TECNICHE / TECHNICAL INFORMATION

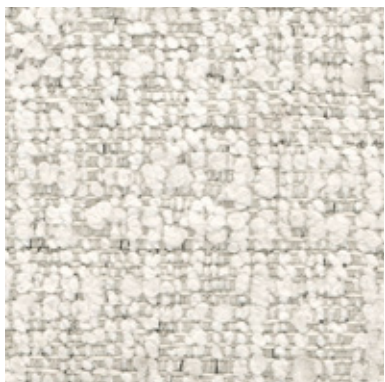
Composizione / composition	58% PVC - 14% PL 15% WO 13% CO
Martindale / martindale	20.000 cicli/cycles
Pilling / Pilling	5

MANUTENZIONE / MAINTENANCE

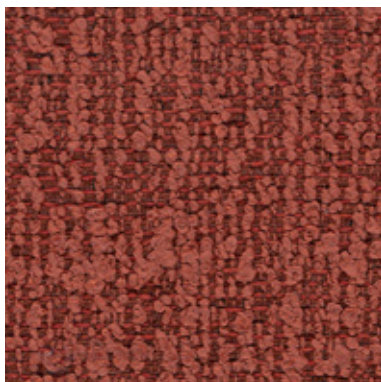


CAT. P

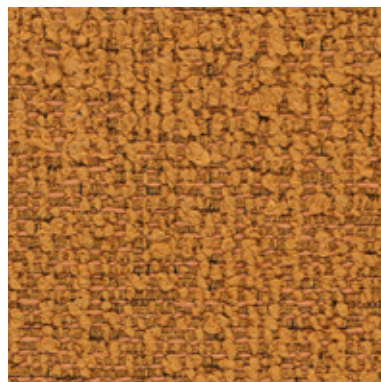
Porto



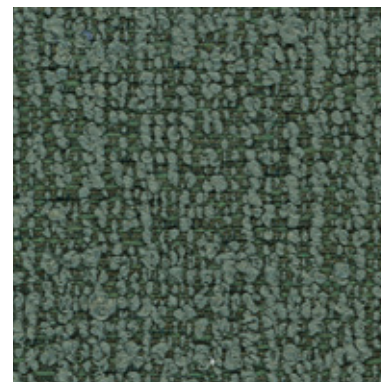
PORTO 101



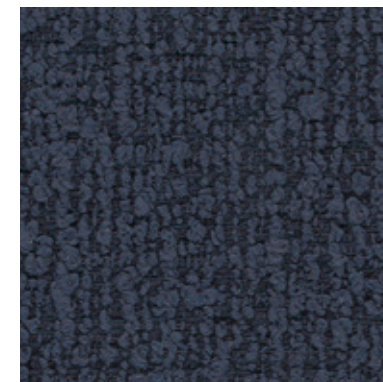
PORTO 108



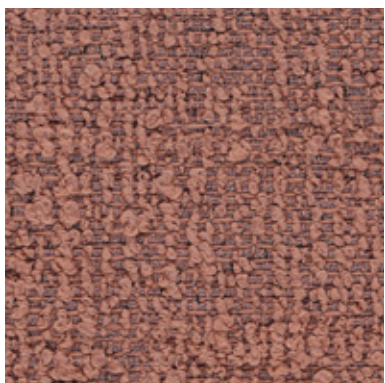
PORTO 109



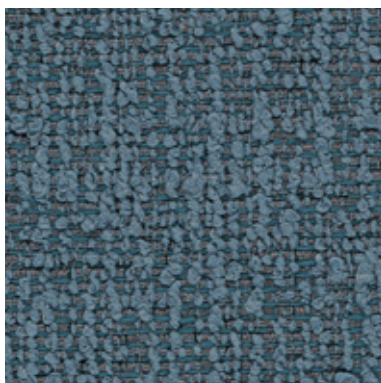
PORTO 110



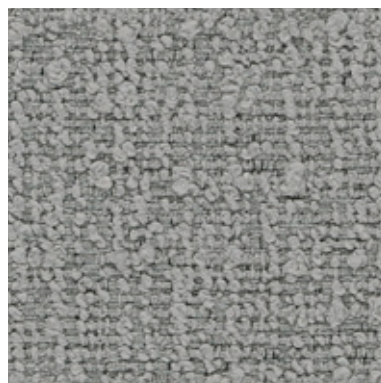
PORTO 113



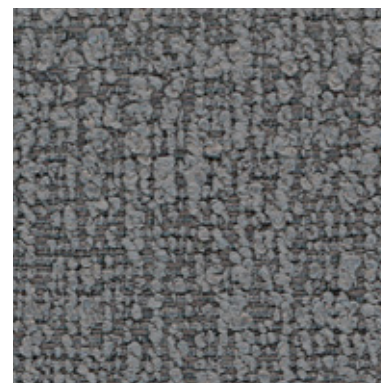
PORTO 117



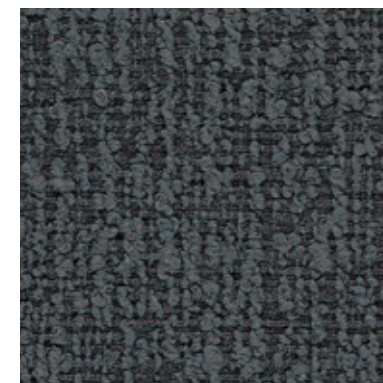
PORTO 120



PORTO 123



PORTO 125



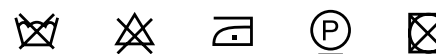
PORTO 127

INFORMAZIONI TECNICHE / TECHNICAL INFORMATION

Composizione / composition	46% RPL - 37% PL - 17% RCO
Martindale / martindale	25.000 cicli/cycles
Pilling / Pilling	4

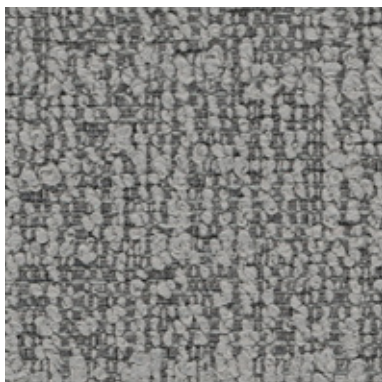
 Eco-friendly

MANUTENZIONE / MAINTENANCE

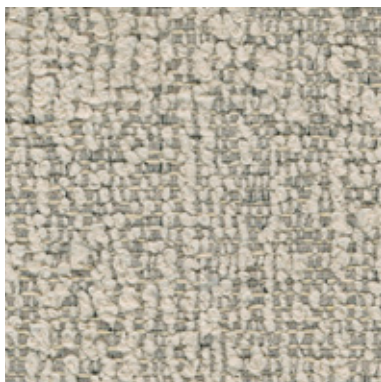


CAT. P

Porto



PORTO 202



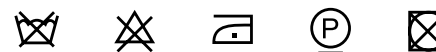
PORTO 204

INFORMAZIONI TECNICHE / TECHNICAL INFORMATION

Composizione / composition	46% RPL - 37% PL - 17% RCO
Martindale / martindale	25.000 cicli/cycles
Pilling / Pilling	4

 Eco-friendly

MANUTENZIONE / MAINTENANCE



CAT. P

Plaza



PLAZA 003



PLAZA 004



PLAZA 005



PLAZA 008



PLAZA 009

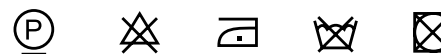


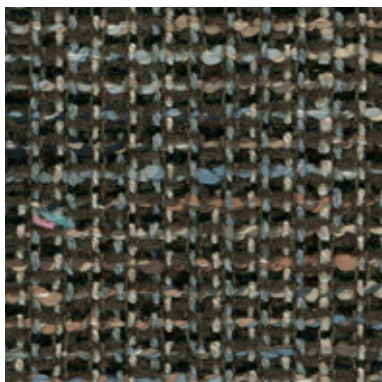
PLAZA 011

INFORMAZIONI TECNICHE / TECHNICAL INFORMATION

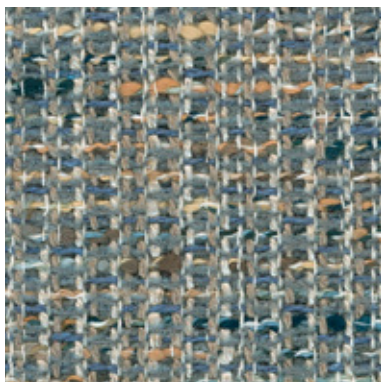
Composizione / composition	32% VI - 30% CO - 21% PC 16% LI - 1% PL
Martindale / martindale	25.000 cicli/cycles
Pilling / Pilling	4

MANUTENZIONE / MAINTENANCE

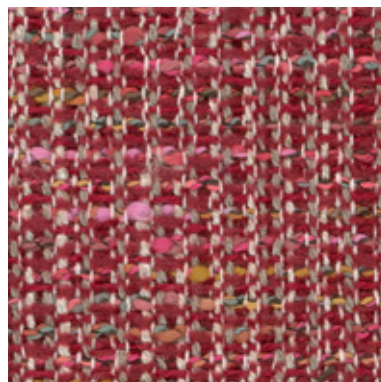




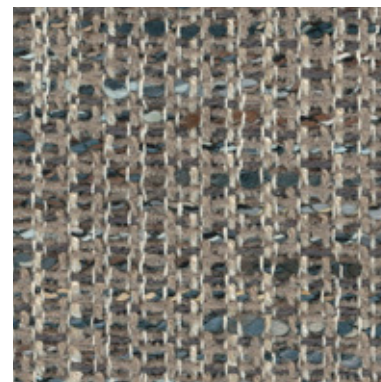
PLAY 001



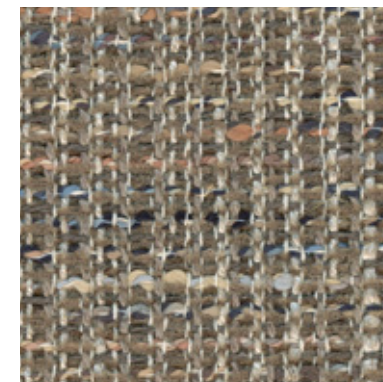
PLAY 002



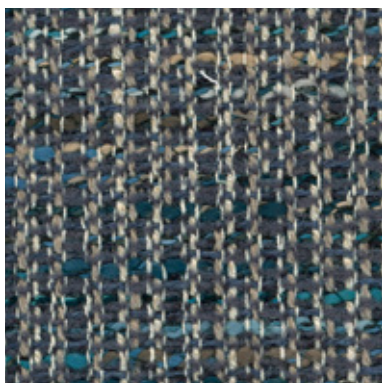
PLAY 004



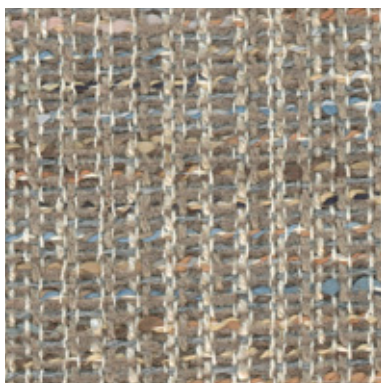
PLAY 007



PLAY 008



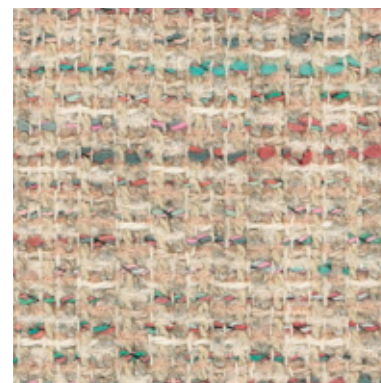
PLAY 013



PLAY 015



PLAY 018

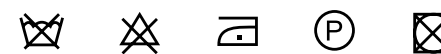


PLAY 021

INFORMAZIONI TECNICHE / TECHNICAL INFORMATION

Composizione / composition	55% CO - 16% PL - 13% VI - 12% PC - 3%LI - 1% PA
Martindale / martindale	20.000 cicli/cycles
Pilling / Pilling	4

MANUTENZIONE / MAINTENANCE





PICTURE 501



PICTURE 502



PICTURE 503



PICTURE 505



PICTURE 506

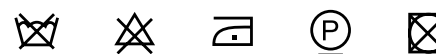


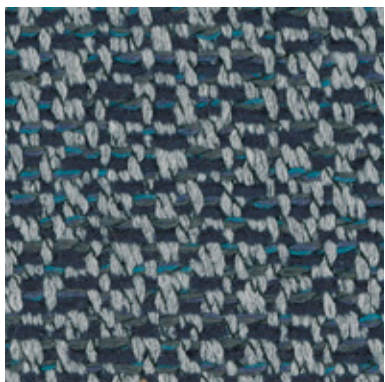
PICTURE 507

INFORMAZIONI TECNICHE / TECHNICAL INFORMATION

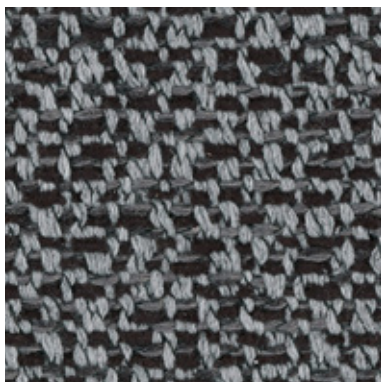
Composizione / composition	58% VI - 28% CO - 14% PL
Martindale / martindale	30.000 cicli/cycles
Pilling / Pilling	4

MANUTENZIONE / MAINTENANCE





PHILIP 012



PHILIP 016



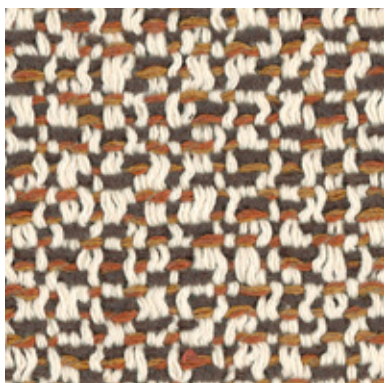
PHILIP 081



PHILIP 092



PHILIP 093



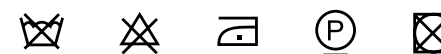
PHILIP 094

INFORMAZIONI TECNICHE / TECHNICAL INFORMATION

Composizione / composition	54% RCO - 31% PL - 15% PC
Martindale / martindale	25.000 cicli/cycles
Pilling / Pilling	4



MANUTENZIONE / MAINTENANCE



CAT. P

Peggy



PEGGY 25



PEGGY 27



PEGGY 102



PEGGY 110



PEGGY 111



PEGGY 116



PEGGY 117



PEGGY 121



PEGGY 201



PEGGY 204

INFORMAZIONI TECNICHE / TECHNICAL INFORMATION

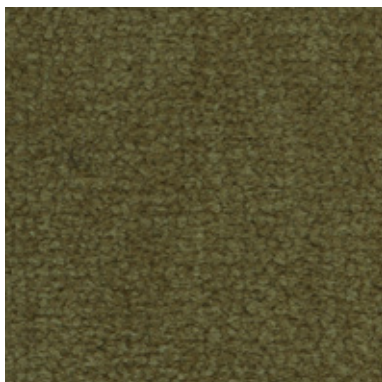
Composizione / composition	80% PL - 20% CO
Martindale / martindale	100.000 cicli/cycles
Pilling / Pilling	4

MANUTENZIONE / MAINTENANCE

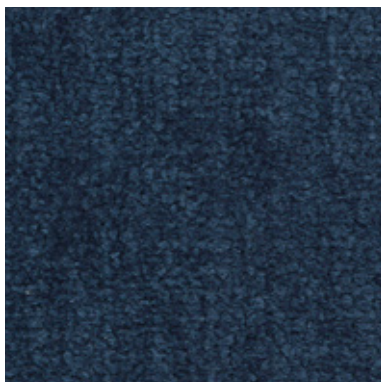


CAT. P

Peggy



PEGGY 207

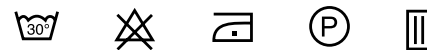


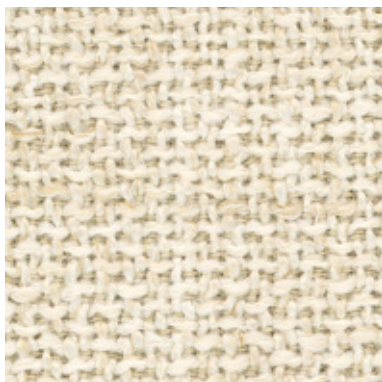
PEGGY 209

INFORMAZIONI TECNICHE / TECHNICAL INFORMATION

Composizione / composition	80% PL - 20% CO
Martindale / martindale	100.000 cicli/cycles
Pilling / Pilling	4

MANUTENZIONE / MAINTENANCE





PEDRO 001



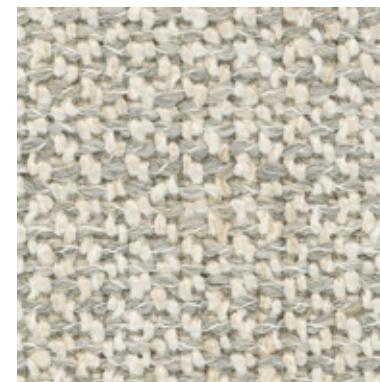
PEDRO 002



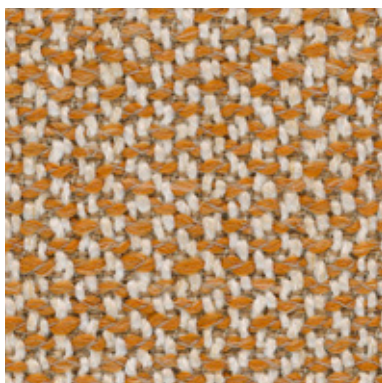
PEDRO 003



PEDRO 007



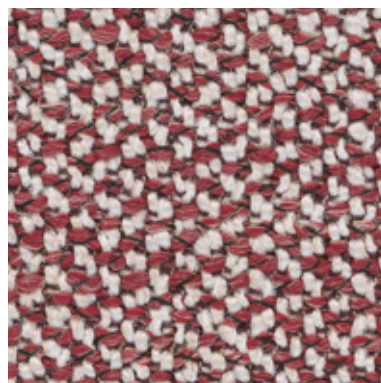
PEDRO 008



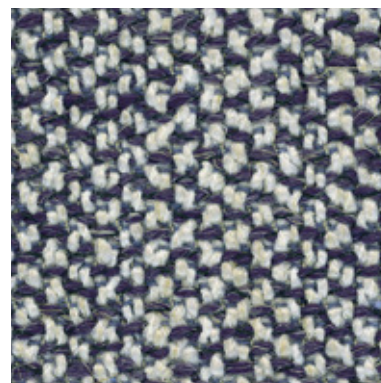
PEDRO 010



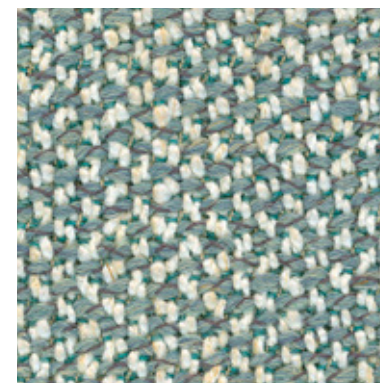
PEDRO 012



PEDRO 014



PEDRO 015

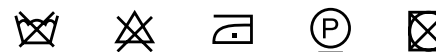


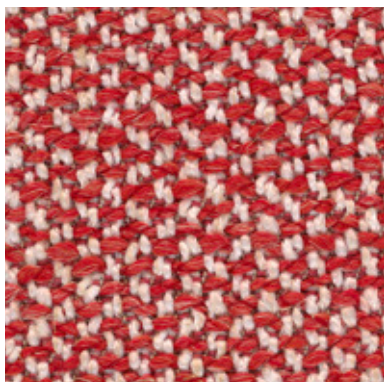
PEDRO 017

INFORMAZIONI TECNICHE / TECHNICAL INFORMATION

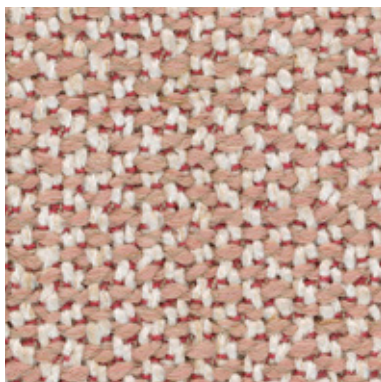
Composizione / composition	45% PC - 12% LI - 19% CO - 12% VI - 12% PL
Martindale / martindale	30.000 cicli/cycles
Pilling / Pilling	4

MANUTENZIONE / MAINTENANCE





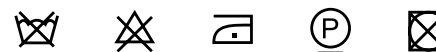
PEDRO 024



PEDRO 026

INFORMAZIONI TECNICHE / TECHNICAL INFORMATION

Composizione / composition	45% PC - 12% LI - 19% CO - 12% VI - 12% PL
Martindale / martindale	30.000 cicli/cycles
Pilling / Pilling	4

MANUTENZIONE / MAINTENANCE

CAT. P

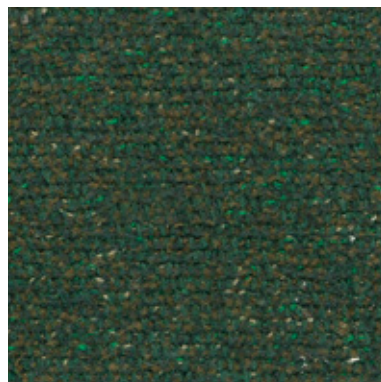
Pechino



PECHINO 201



PECHINO 202



PECHINO 215



PECHINO 217



PECHINO 219



PECHINO 221



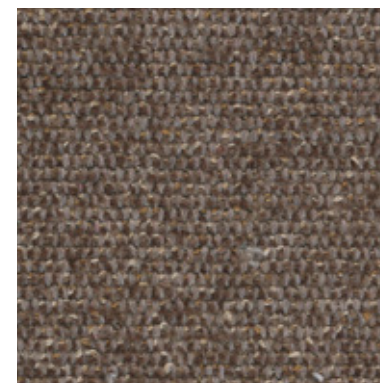
PECHINO 233



PECHINO 238



PECHINO 277



PECHINO 338

INFORMAZIONI TECNICHE / TECHNICAL INFORMATION

Composizione / composition	60% RCO - 40% PL
Martindale / martindale	60.000 cicli/cycles
Pilling / Pilling	5



Eco-friendly

MANUTENZIONE / MAINTENANCE



CAT. P

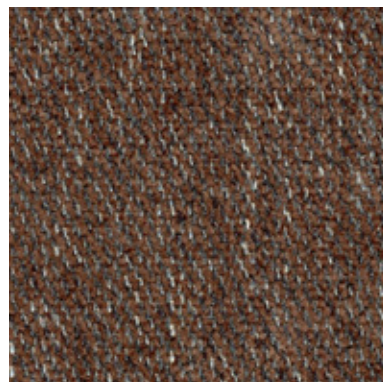
Partner



PARTNER 002



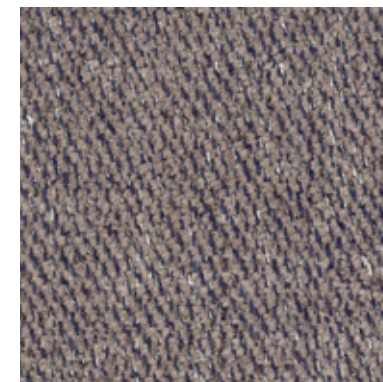
PARTNER 005



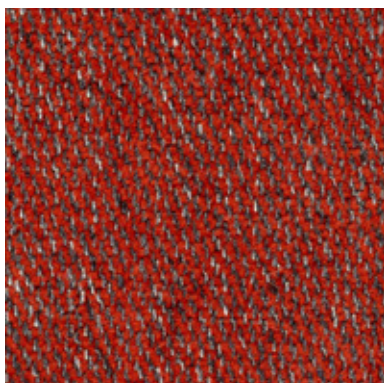
PARTNER 007



PARTNER 015



PARTNER 021



PARTNER 064



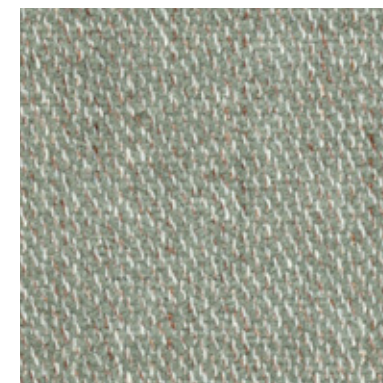
PARTNER 105



PARTNER 115



PARTNER 501



PARTNER 505

INFORMAZIONI TECNICHE / TECHNICAL INFORMATION

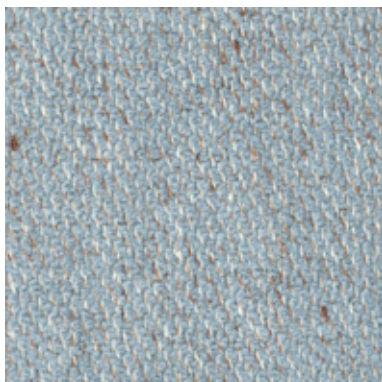
Composizione / composition	43% PL - 23% CO - 17% VI - 17% LI
Martindale / martindale	30.000 cicli/cycles
Pilling / Pilling	4

MANUTENZIONE / MAINTENANCE



CAT. P

Partner



PARTNER 506

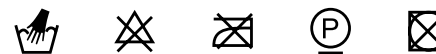


PARTNER 509

INFORMAZIONI TECNICHE / TECHNICAL INFORMATION

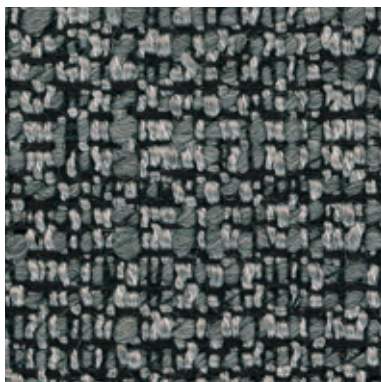
Composizione / composition	43% PL - 23% CO - 17% VI - 17% LI
Martindale / martindale	30.000 cicli/cycles
Pilling / Pilling	4

MANUTENZIONE / MAINTENANCE





PABLO 09



PABLO 13



PABLO 49



PABLO 50



PABLO 75



PABLO 96



PABLO 154



PABLO 163



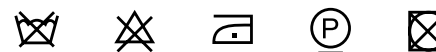
PABLO 168



PABLO 171

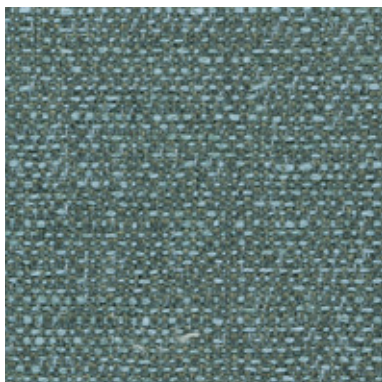
INFORMAZIONI TECNICHE / TECHNICAL INFORMATION

Composizione / composition	23% WO - 48% PC - 12% PL - 7% CO - 10% NY
Martindale / martindale	24.000 cicli/cycles
Pilling / Pilling	4

MANUTENZIONE / MAINTENANCE

CAT. M

Music



MUSIC 009



MUSIC 046



MUSIC 051



MUSIC 057



MUSIC 059



MUSIC 061



MUSIC 063



MUSIC 065

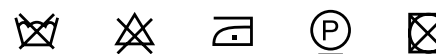


MUSIC 083

INFORMAZIONI TECNICHE / TECHNICAL INFORMATION

Composizione / composition	66% PC - 17% LI - 9% CO - 8% VI
Martindale / martindale	30.000 cicli/cycles
Pilling / Pilling	4

MANUTENZIONE / MAINTENANCE



CAT. M

Miami



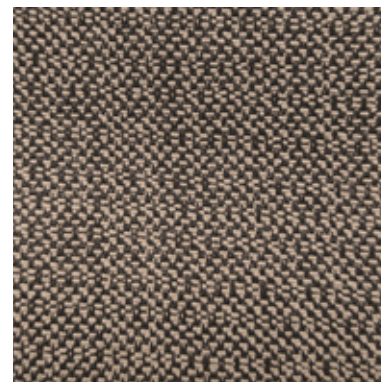
MIAMI 020



MIAMI 040



MIAMI 041



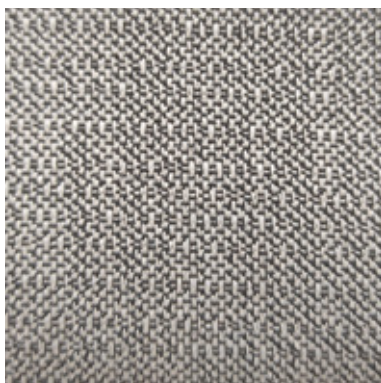
MIAMI 042



MIAMI 201



MIAMI 302



MIAMI 403

INFORMAZIONI TECNICHE / TECHNICAL INFORMATION

Composizione / composition	30 % CO - 70% PL
Martindale / martindale	20.000 cicli/cycles
Pilling / Pilling	4

MANUTENZIONE / MAINTENANCE



CAT. M

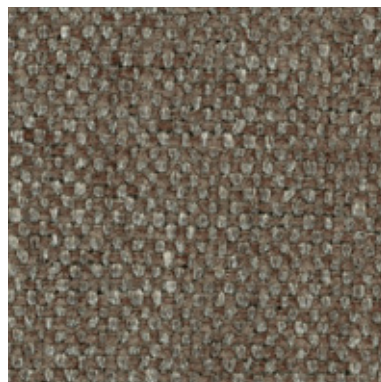
Meghan



MEGHAN 04



MEGHAN 13



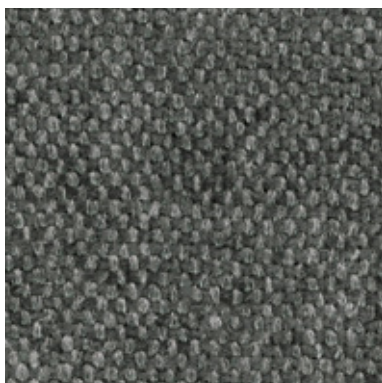
MEGHAN 19



MEGHAN 24



MEGHAN 56

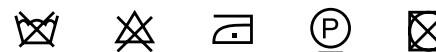


MEGHAN 63

INFORMAZIONI TECNICHE / TECHNICAL INFORMATION

Composizione / composition	66% PC - 11% LI - 12% PL - 11% VI
Martindale / martindale	30.000 cicli/cycles
Pilling / Pilling	4

MANUTENZIONE / MAINTENANCE

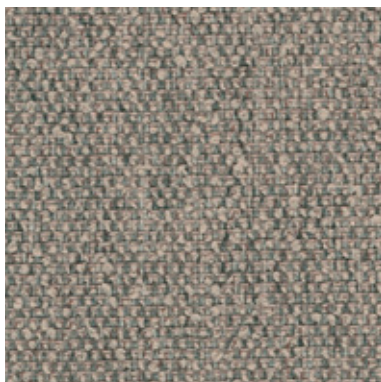


CAT. M

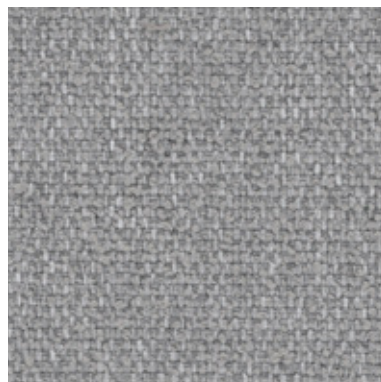
Medley



MEDLEY 002



MEDLEY 004



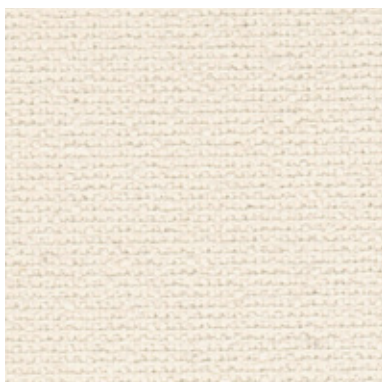
MEDLEY 007



MEDLEY 009



MEDLEY 010



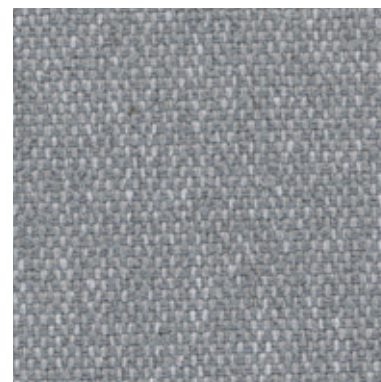
MEDLEY 011



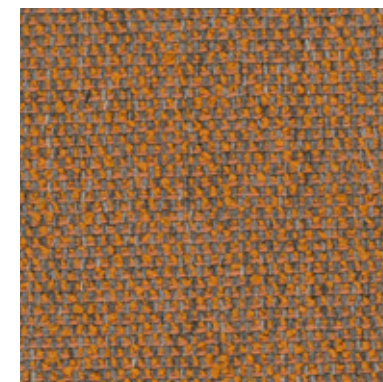
MEDLEY 016



MEDLEY 018



MEDLEY 020

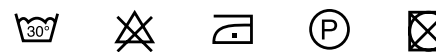


MEDLEY 022

INFORMAZIONI TECNICHE / TECHNICAL INFORMATION

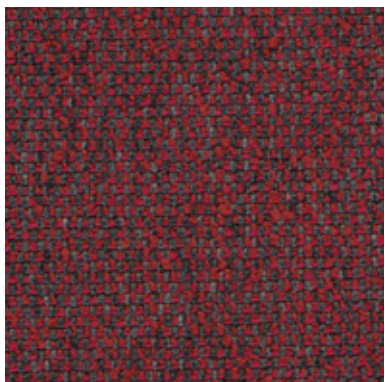
Composizione / composition	85% PL - 15% CO
Martindale / martindale	30.000 cicli/cycles
Pilling / Pilling	5

MANUTENZIONE / MAINTENANCE



CAT. M

Medley



MEDLEY 023



MEDLEY 027



MEDLEY 028

INFORMAZIONI TECNICHE / TECHNICAL INFORMATION

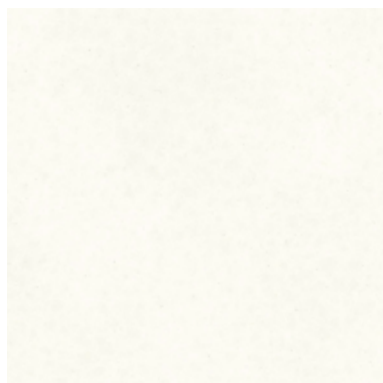
Composizione / composition	85% PL - 15% CO
Martindale / martindale	30.000 cicli/cycles
Pilling / Pilling	5

MANUTENZIONE / MAINTENANCE

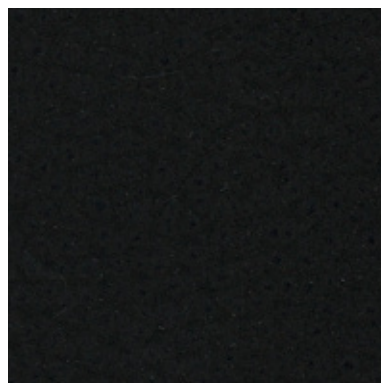




MAYA 000



MAYA 001



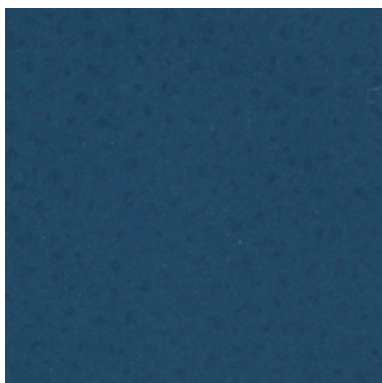
MAYA 016



MAYA 020



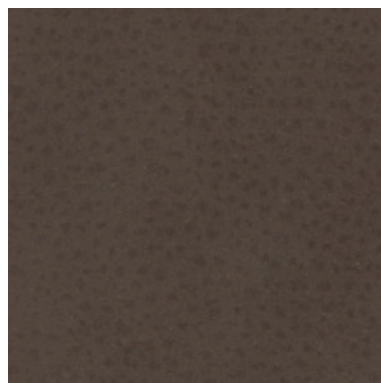
MAYA 100



MAYA 120



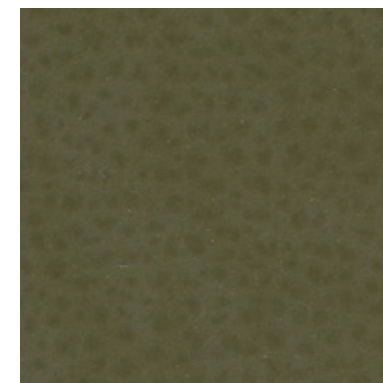
MAYA 175



MAYA 240



MAYA 275

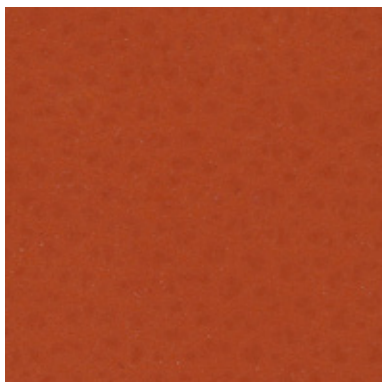


MAYA 280

INFORMAZIONI TECNICHE / TECHNICAL INFORMATION

Composizione / composition	30% CO - 2% PU - 68% PVC
Martindale / martindale	>50.000 cicli/cycles
Pilling / Pilling	-

MANUTENZIONE / MAINTENANCE



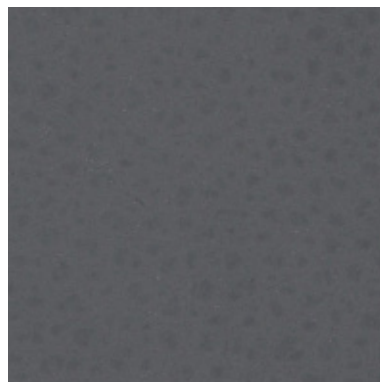
MAYA 410



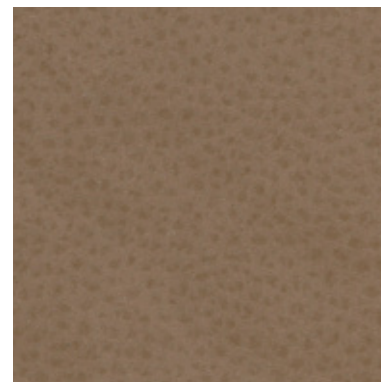
MAYA 450



MAYA 750



MAYA 791



MAYA 950

INFORMAZIONI TECNICHE / TECHNICAL INFORMATION

Composizione / composition	30% CO - 2% PU - 68% PVC
Martindale / martindale	>50.000 cicli/cycles
Pilling / Pilling	-

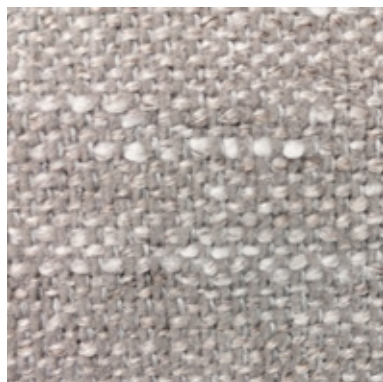
MANUTENZIONE / MAINTENANCE

CAT. M

Martin



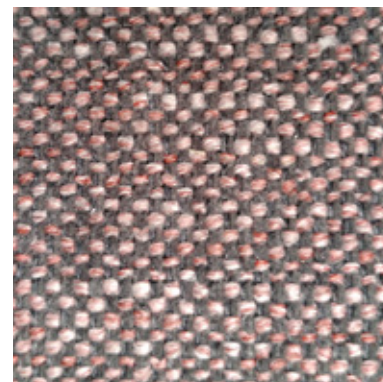
MARTIN 101



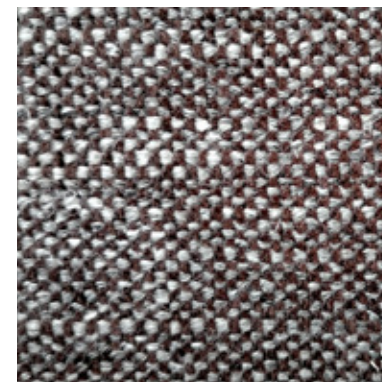
MARTIN 102



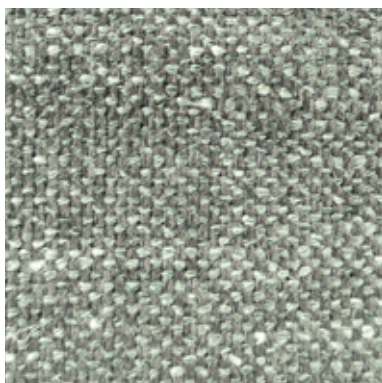
MARTIN 103



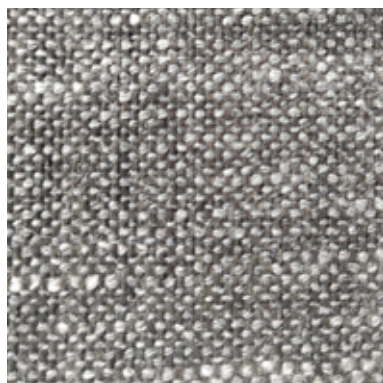
MARTIN 104



MARTIN 105



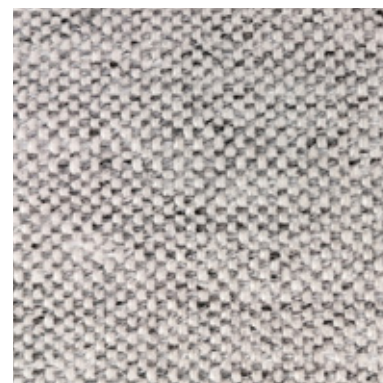
MARTIN 106



MARTIN 107



MARTIN 108



MARTIN 109

INFORMAZIONI TECNICHE / TECHNICAL INFORMATION

Composizione / composition	28% PL - 23% LI - 14% WO - 13% CO - 9% VI - 7% PA - 5% PC
Martindale / martindale	50.000 cicli/cycles
Pilling / Pilling	4

MANUTENZIONE / MAINTENANCE



CAT. M

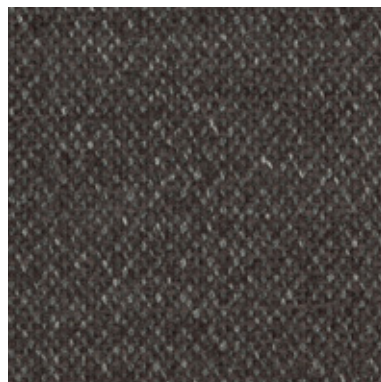
Marshall



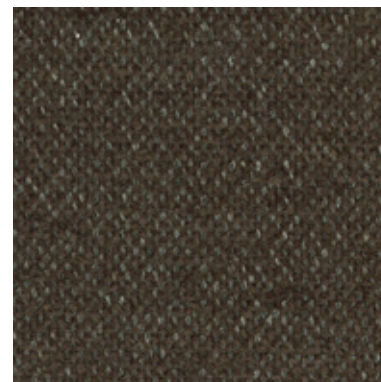
MARSHALL 002



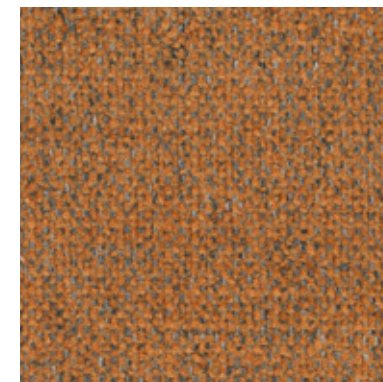
MARSHALL 006



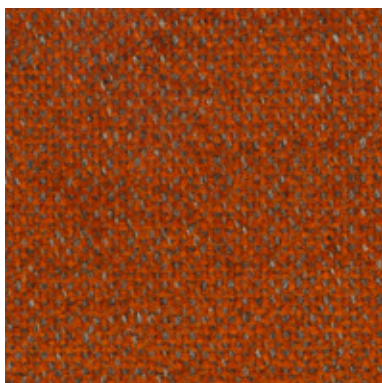
MARSHALL 009



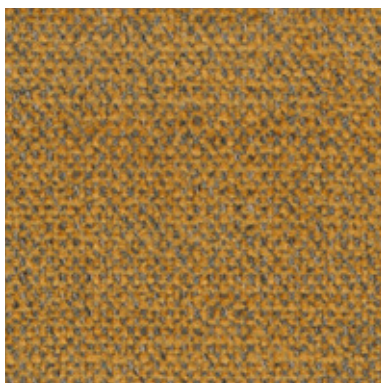
MARSHALL 010



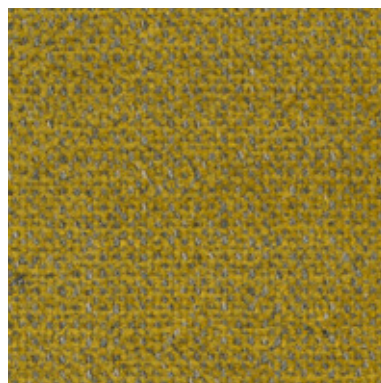
MARSHALL 012



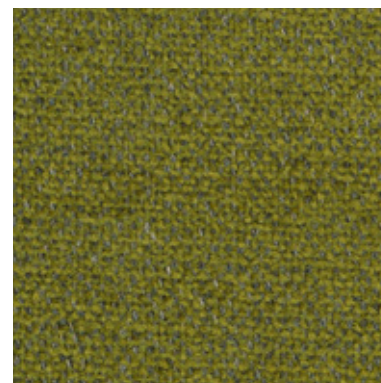
MARSHALL 013



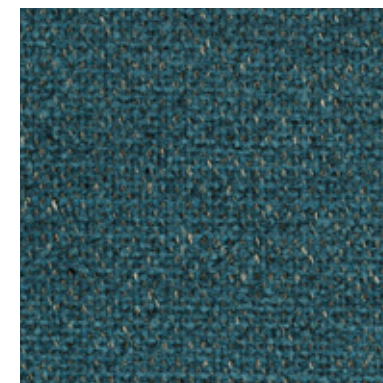
MARSHALL 014



MARSHALL 016



MARSHALL 017

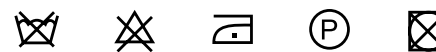


MARSHALL 020

INFORMAZIONI TECNICHE / TECHNICAL INFORMATION

Composizione / composition	54% PL - 28% PC - 18% CO
Martindale / martindale	25.000 cicli/cycles
Pilling / Pilling	5

MANUTENZIONE / MAINTENANCE

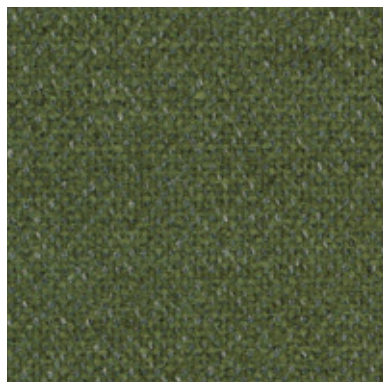


CAT. M

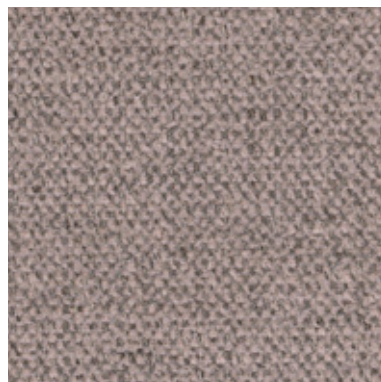
Marshall



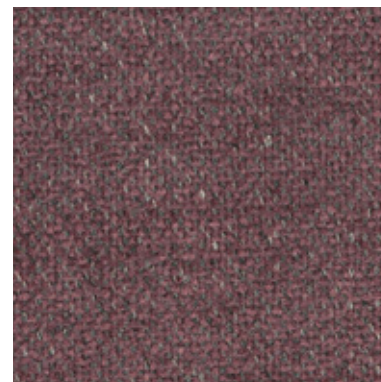
MARSHALL 022



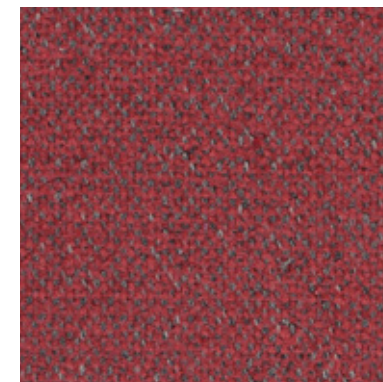
MARSHALL 026



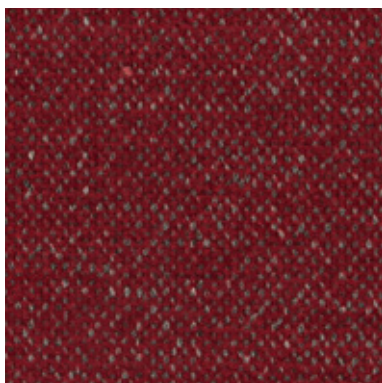
MARSHALL 029



MARSHALL 031



MARSHALL 033



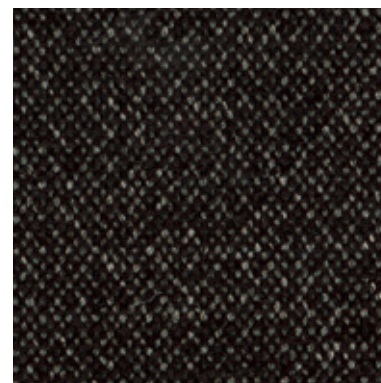
MARSHALL 034



MARSHALL 036



MARSHALL 037



MARSHALL 038

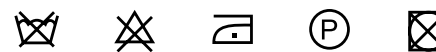


MARSHALL 040

INFORMAZIONI TECNICHE / TECHNICAL INFORMATION

Composizione / composition	54% PL - 28% PC - 18% CO
Martindale / martindale	25.000 cicli/cycles
Pilling / Pilling	5

MANUTENZIONE / MAINTENANCE



CAT. M

Marshall



MARSHALL 041

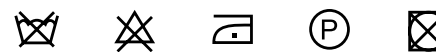


MARSHALL 042

INFORMAZIONI TECNICHE / TECHNICAL INFORMATION

Composizione / composition	54% PL - 28% PC - 18% CO
Martindale / martindale	25.000 cicli/cycles
Pilling / Pilling	5

MANUTENZIONE / MAINTENANCE



CAT. M

Manhattan



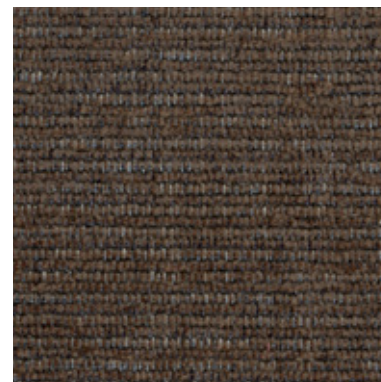
MANHATTAN 001



MANHATTAN 002



MANHATTAN 009



MANHATTAN 012



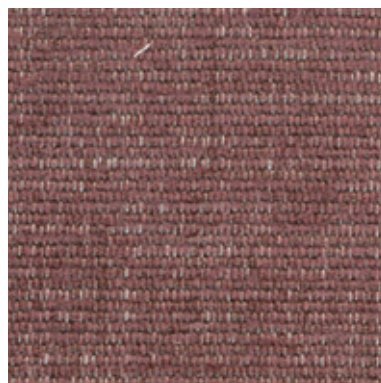
MANHATTAN 017



MANHATTAN 019



MANHATTAN 020



MANHATTAN 021



MANHATTAN 102



MANHATTAN 103

INFORMAZIONI TECNICHE / TECHNICAL INFORMATION

Composizione / composition	50% PL - 27% PC - 9% CO - 7% LI - 7% VI
Martindale / martindale	25.000 cicli/cycles
Pilling / Pilling	5

MANUTENZIONE / MAINTENANCE



CAT. M

Manhattan



MANHATTAN 104

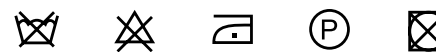


MANHATTAN 105

INFORMAZIONI TECNICHE / TECHNICAL INFORMATION

Composizione / composition	50% PL - 27% PC - 9% CO - 7% LI - 7% VI
Martindale / martindale	25.000 cicli/cycles
Pilling / Pilling	5

MANUTENZIONE / MAINTENANCE



CAT. M

Malindi



MALINDI 701



MALINDI 740



MALINDI 741



MALINDI 742

INFORMAZIONI TECNICHE / TECHNICAL INFORMATION

Composizione / composition	59% CO - 41% PL
Martindale / martindale	20.000 cicli/cycles
Pilling / Pilling	4

MANUTENZIONE / MAINTENANCE



CAT. M

Macro



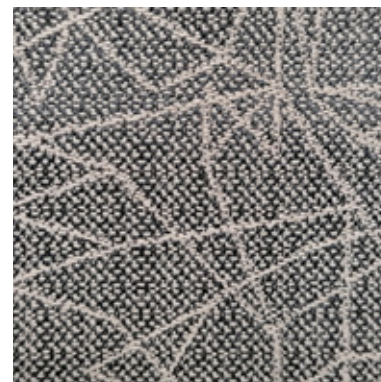
MACRO 002



MACRO 005



MACRO 008



MACRO 020



MACRO 021



MACRO 031

INFORMAZIONI TECNICHE / TECHNICAL INFORMATION

Composizione / composition	59% CO - 41% PL
Martindale / martindale	20.000 cicli/cycles
Pilling / Pilling	4

MANUTENZIONE / MAINTENANCE

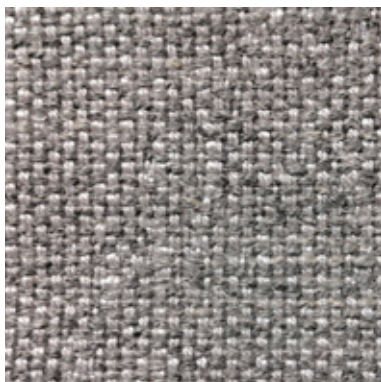


CAT. M

Madera



MADERA 350



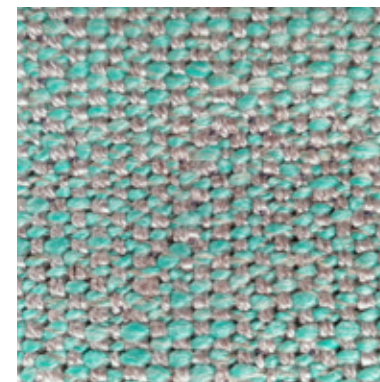
MADERA 360



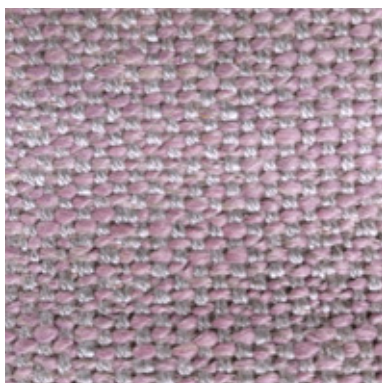
MADERA 361



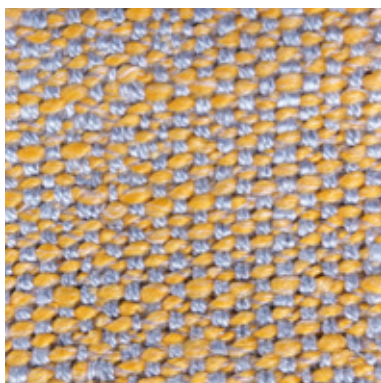
MADERA 362



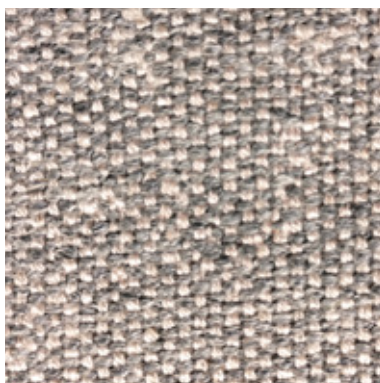
MADERA 363



MADERA 364



MADERA 365



MADERA 551



MADERA 552



MADERA 553

INFORMAZIONI TECNICHE / TECHNICAL INFORMATION

Composizione / composition	28% CO - 26%VI - 25% PC - 16% LI - 5% PL
Martindale / martindale	25.000 cicli/cycles
Pilling / Pilling	4

MANUTENZIONE / MAINTENANCE

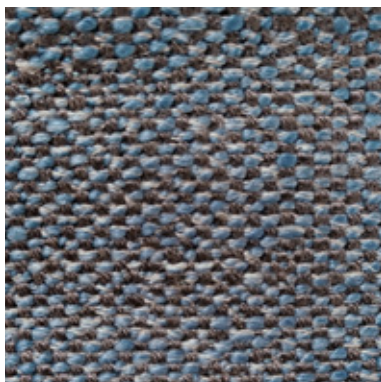


CAT. M

Madera



MADERA 571



MACRO 572



MACRO 573



MACRO 575

INFORMAZIONI TECNICHE / TECHNICAL INFORMATION

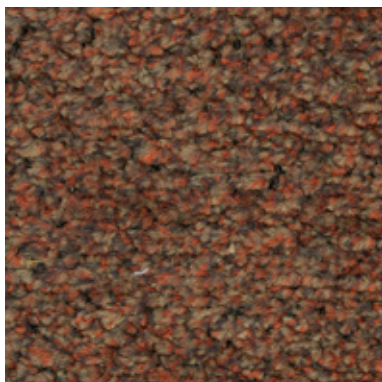
Composizione / composition	28% CO - 26%VI - 25% PC - 16% LI - 5% PL
Martindale / martindale	25.000 cicli/cycles
Pilling / Pilling	4

MANUTENZIONE / MAINTENANCE



CAT. L

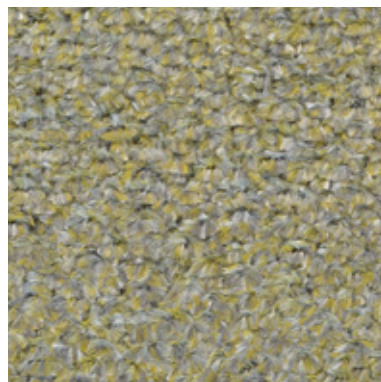
Lolita



LOLITA 105



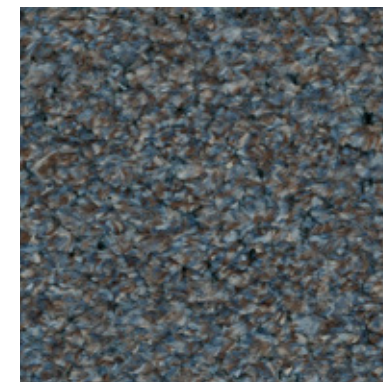
LOLITA 125



LOLITA 129



LOLITA 131



LOLITA 133



LOLITA 134



LOLITA 153

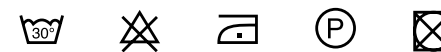


LOLITA 159

INFORMAZIONI TECNICHE / TECHNICAL INFORMATION

Composizione / composition	100% PL
Martindale / martindale	40.000 cicli/cycles
Pilling / Pilling	4

MANUTENZIONE / MAINTENANCE



CAT. L

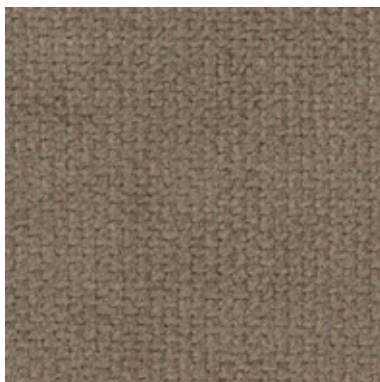
Logan



LOGAN 001



LOGAN 002



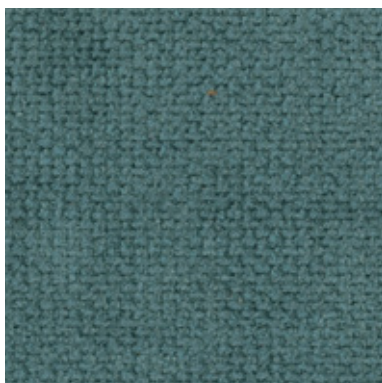
LOGAN 004



LOGAN 006



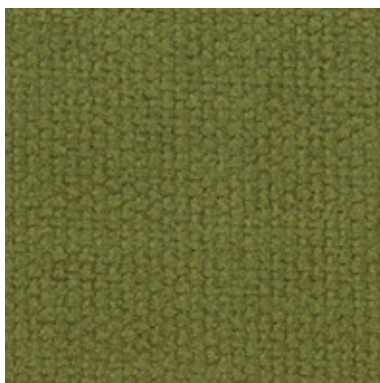
LOGAN 011



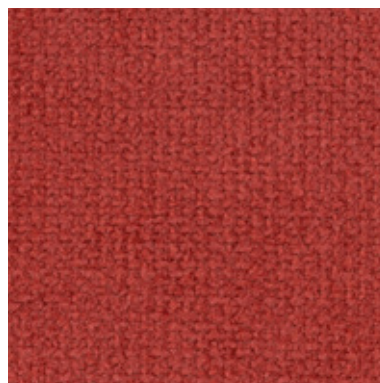
LOGAN 012



LOGAN 014



LOGAN 015



LOGAN 019



LOGAN 020

INFORMAZIONI TECNICHE / TECHNICAL INFORMATION

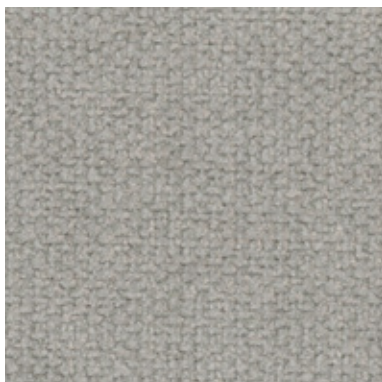
Composizione / composition	100% PL
Martindale / martindale	100.000 cicli/cycles
Pilling / Pilling	5

MANUTENZIONE / MAINTENANCE

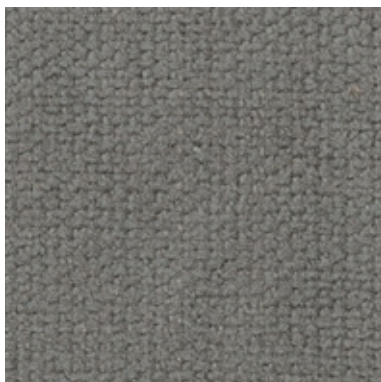


CAT. L

Logan



LOGAN 021



LOGAN 022



LOGAN 025



LOGAN 026

INFORMAZIONI TECNICHE / TECHNICAL INFORMATION

Composizione / composition	100% PL
Martindale / martindale	100.000 cicli/cycles
Pilling / Pilling	5

MANUTENZIONE / MAINTENANCE



CAT. L

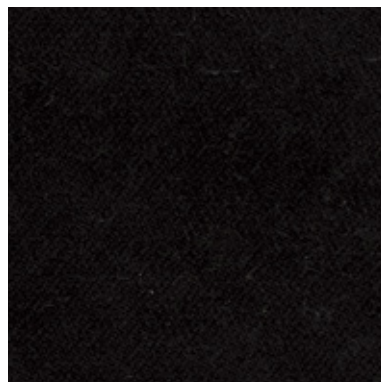
Like



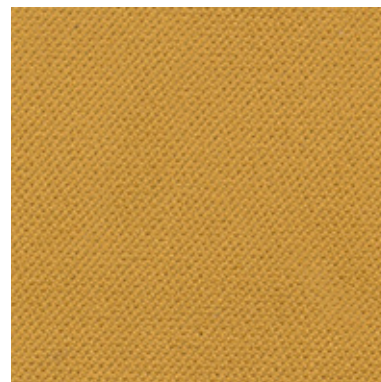
LIKE 002



LIKE 111



LIKE 200



LIKE 301



LIKE 303



LIKE 304



LIKE 307



LIKE 402




LIKE 404




LIKE 405

INFORMAZIONI TECNICHE / TECHNICAL INFORMATION

Composizione / composition	100% PL
Martindale / martindale	100.000 cicli/cycles
Pilling / Pilling	4

 **anallergico**
hypoallergenic

 **irrestringibile**
non-shrink

 **antimacchia**
stain resistant

MANUTENZIONE / MAINTENANCE



CAT. L

Like



LIKE 408



LIKE 600



LIKE 601



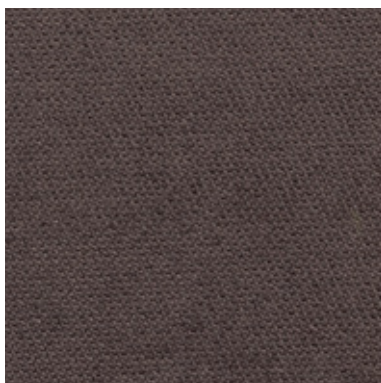
LIKE 602



LIKE 603



LIKE 604



LIKE 605



LIKE 700




LIKE 702




LIKE 704

INFORMAZIONI TECNICHE / TECHNICAL INFORMATION

Composizione / composition	100% PL
Martindale / martindale	100.000 cicli/cycles
Pilling / Pilling	4

 **anallergico**
hypoallergenic

 **irrestringibile**
non-shrink

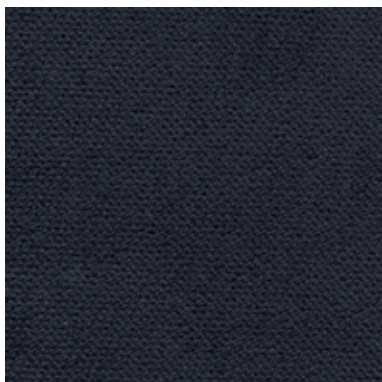
 **antimacchia**
stain resistant

MANUTENZIONE / MAINTENANCE

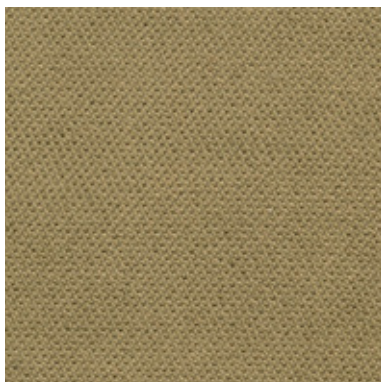


CAT. L

Like



LIKE 705




LIKE 801



LIKE 804

INFORMAZIONI TECNICHE / TECHNICAL INFORMATION

Composizione / composition	100% PL
Martindale / martindale	100.000 cicli/cycles
Pilling / Pilling	4

 **anallergico**
hypoallergenic

 **irrestringibile**
non-shrink

 **antimacchia**
stain resistant

MANUTENZIONE / MAINTENANCE



CAT. L

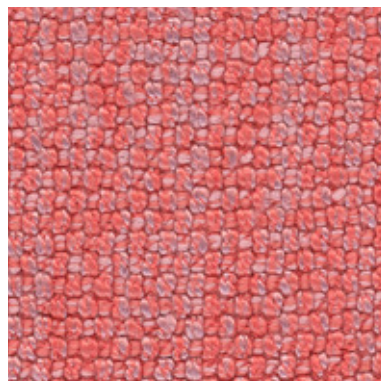
Lewis



LEWIS 102



LEWIS 201



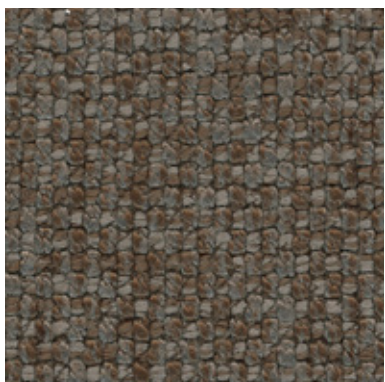
LEWIS 315



LEWIS 400



LEWIS 403



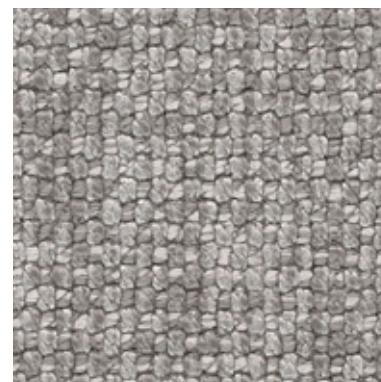
LEWIS 405



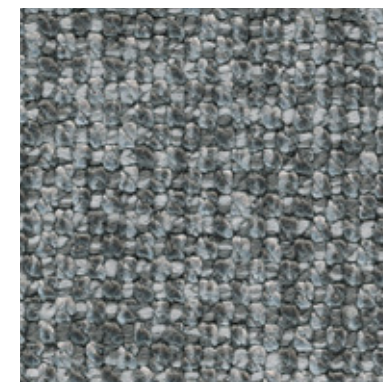
LEWIS 411



LEWIS 503



LEWIS 600



LEWIS 601

INFORMAZIONI TECNICHE / TECHNICAL INFORMATION

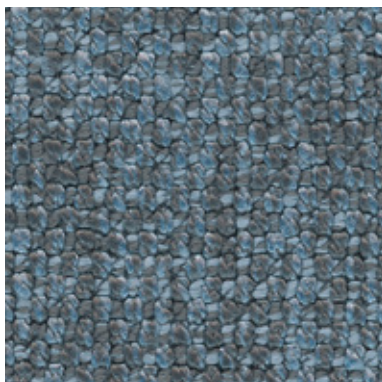
Composizione / composition	57% PL - 43% VI
Martindale / martindale	100.000 cicli/cycles
Pilling / Pilling	4

MANUTENZIONE / MAINTENANCE

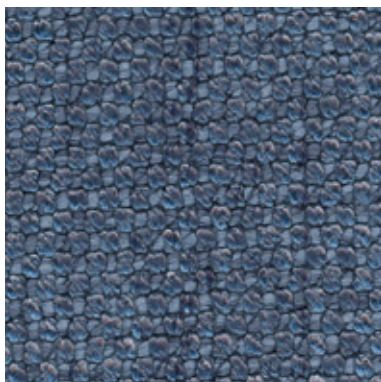


CAT. L

Lewis



LEWIS 705



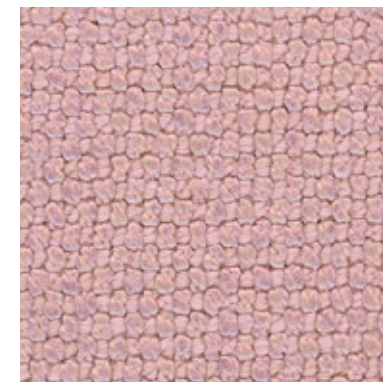
LEWIS 714



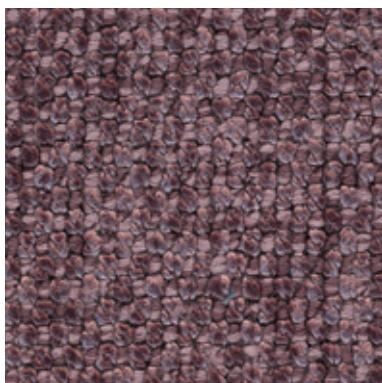
LEWIS 800



LEWIS 802



LEWIS 900



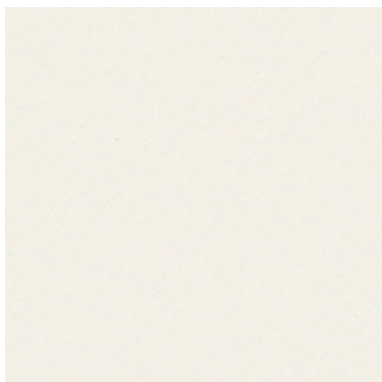
LEWIS 905

INFORMAZIONI TECNICHE / TECHNICAL INFORMATION

Composizione / composition	57% PL - 43% VI
Martindale / martindale	100.000 cicli/cycles
Pilling / Pilling	4

MANUTENZIONE / MAINTENANCE





EVEREST 002



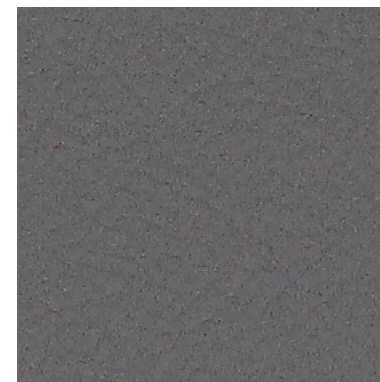
EVEREST 004



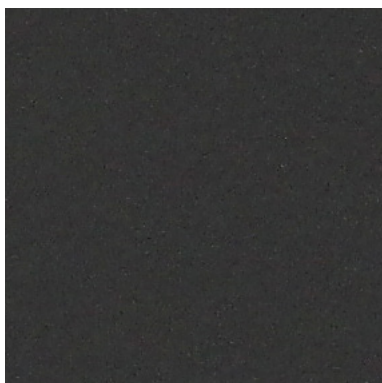
EVEREST 005



EVEREST 006



EVEREST 007



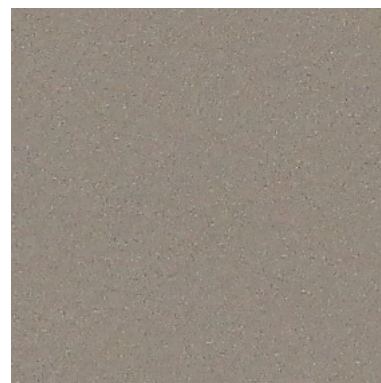
EVEREST 008



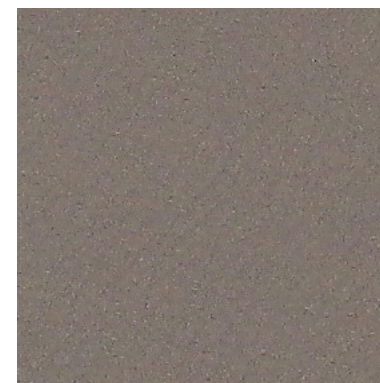
EVEREST 009



EVEREST 011



EVEREST 014

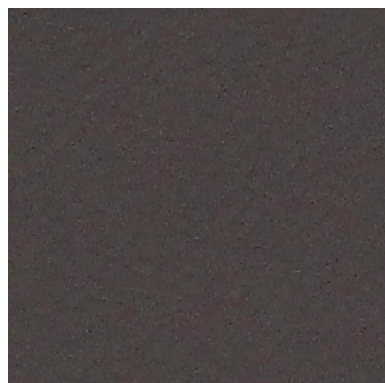


EVEREST 015

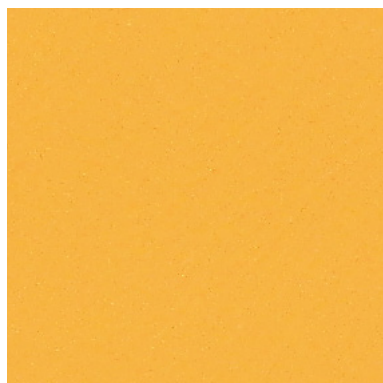
INFORMAZIONI TECNICHE / TECHNICAL INFORMATION

Composizione / composition	85% PVC - 15% PU
Martindale / martindale	50.000 cicli/cycles
Pilling / Pilling	-

MANUTENZIONE / MAINTENANCE



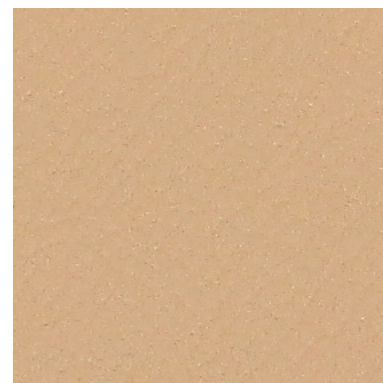
EVEREST 016



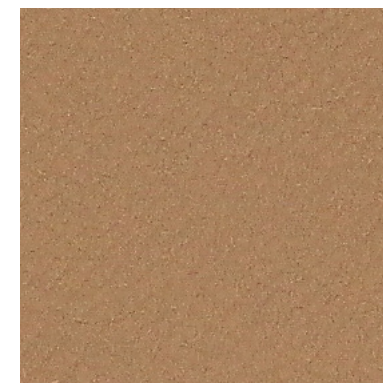
EVEREST 017



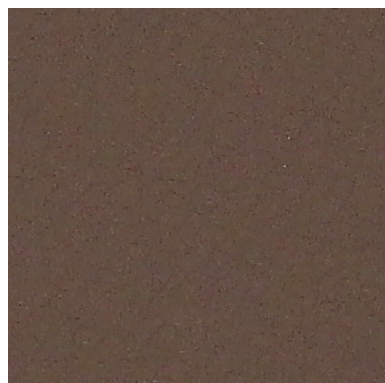
EVEREST 026



EVEREST 029



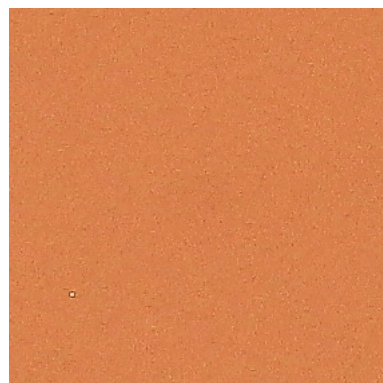
EVEREST 030



EVEREST 031



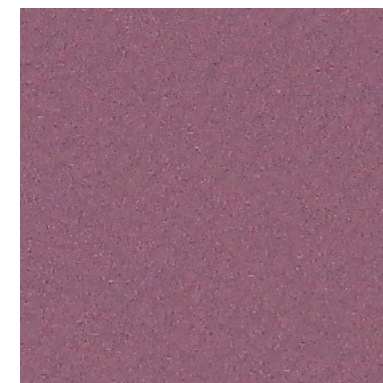
EVEREST 035



EVEREST 037



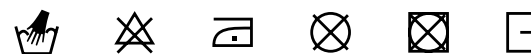
EVEREST 040



EVEREST 043

INFORMAZIONI TECNICHE / TECHNICAL INFORMATION

Composizione / composition	85% PVC - 15% PU
Martindale / martindale	50.000 cicli/cycles
Pilling / Pilling	-

MANUTENZIONE / MAINTENANCE

SIMILPELLE CAT. E

Everest



EVEREST 045



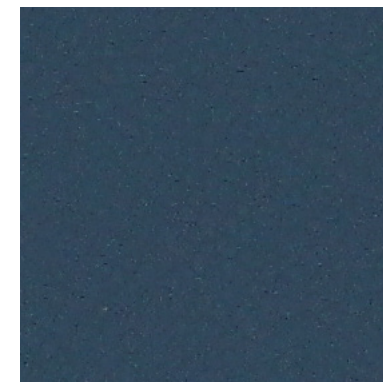
EVEREST 046



EVEREST 048



EVEREST 051

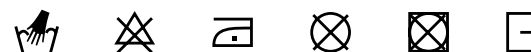


EVEREST 055

INFORMAZIONI TECNICHE / TECHNICAL INFORMATION

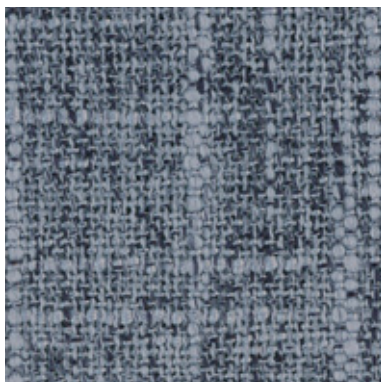
Composizione / composition	85% PVC - 15% PU
Martindale / martindale	50.000 cicli/cycles
Pilling / Pilling	-

MANUTENZIONE / MAINTENANCE





ERIK 007



ERIK 015



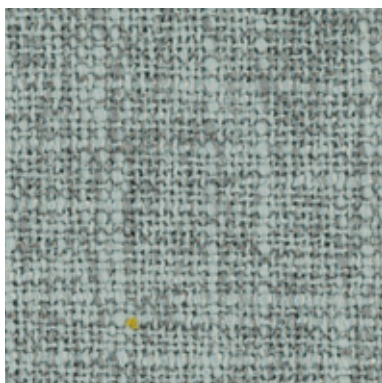
ERIK 018



ERIK 019



ERIK 020



ERIK 021



ERIK 023



ERIK 027



ERIK 130



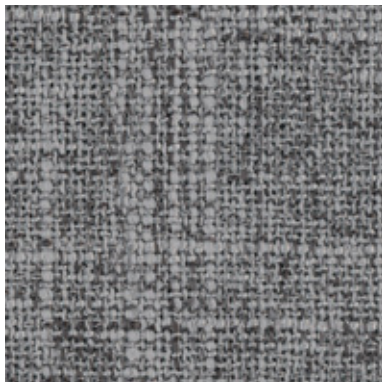
ERIK 001

INFORMAZIONI TECNICHE / TECHNICAL INFORMATION

Composizione / composition	100% PL
Martindale / martindale	30.000 cicli/cycles
Pilling / Pilling	4

MANUTENZIONE / MAINTENANCE





ENTER 205



ENTER 616

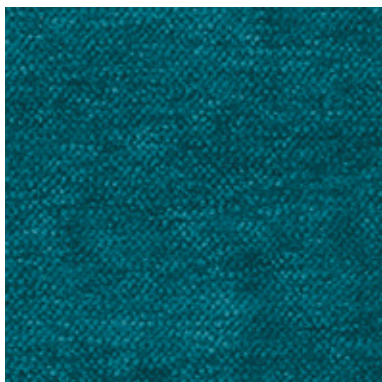
INFORMAZIONI TECNICHE / TECHNICAL INFORMATION

Composizione / composition	100% PL
Martindale / martindale	30.000 cicli/cycles
Pilling / Pilling	4

MANUTENZIONE / MAINTENANCE

CAT. E

Enter



ENTER 006



ENTER 009



ENTER 013



ENTER 020



ENTER 024



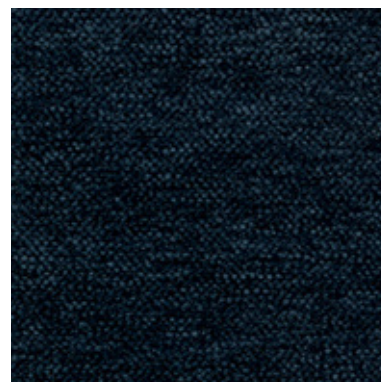
ENTER 025



ENTER 030



ENTER 037



ENTER 041



ENTER 044

INFORMAZIONI TECNICHE / TECHNICAL INFORMATION

Composizione / composition	100% PL
Martindale / martindale	40.000 cicli/cycles
Pilling / Pilling	4

MANUTENZIONE / MAINTENANCE



CAT. E

Enter



ENTER 057



ENTER 059



ENTER 062



ENTER 074



ENTER 100



ENTER 101

INFORMAZIONI TECNICHE / TECHNICAL INFORMATION

Composizione / composition	100% PL
Martindale / martindale	40.000 cicli/cycles
Pilling / Pilling	4

MANUTENZIONE / MAINTENANCE



CAT. E

Emery



EMERY 07



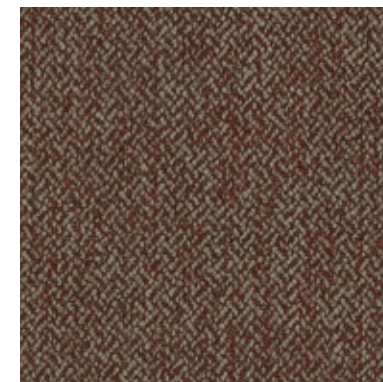
EMERY 21



EMERY 24



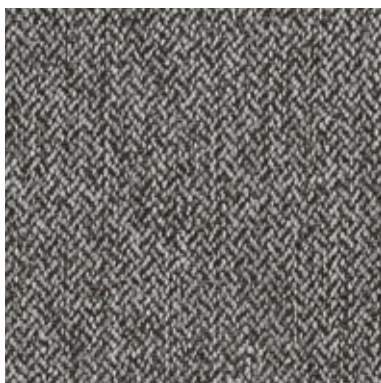
EMERY 25



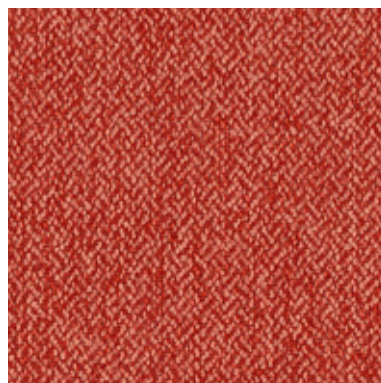
EMERY 30



EMERY 31



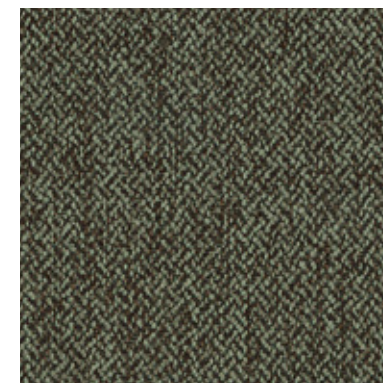
EMERY 37



EMERY 44




EMERY 53



EMERY 62

INFORMAZIONI TECNICHE / TECHNICAL INFORMATION

Composizione / composition	100% PL
Martindale / martindale	40.000 cicli/cycles
Pilling / Pilling	4

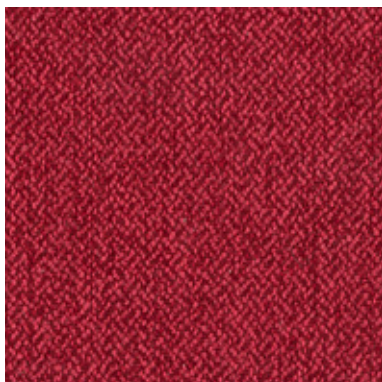
 **idrorepellente**
water repellent

MANUTENZIONE / MAINTENANCE



CAT. E

Emery




EMERY 70



EMERY 74

INFORMAZIONI TECNICHE / TECHNICAL INFORMATION

Composizione / composition	100% PL
Martindale / martindale	40.000 cicli/cycles
Pilling / Pilling	4

 **idrorepellente**
water repellent

MANUTENZIONE / MAINTENANCE



CAT. E

Edward



EDWARD 807



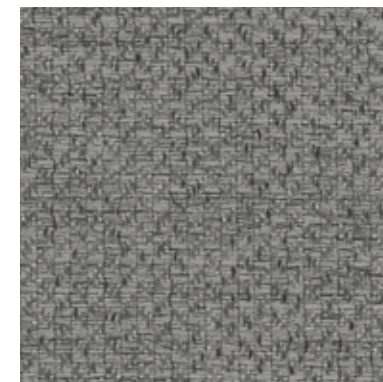
EDWARD 820



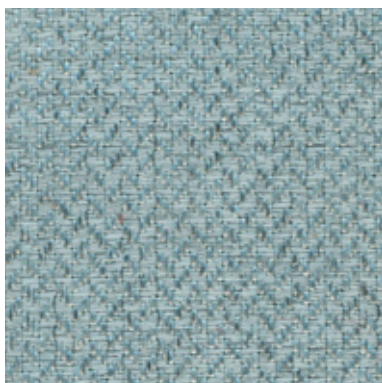
EDWARD 825



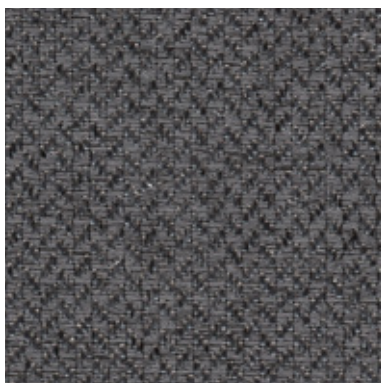
EDWARD 831



EDWARD 832



EDWARD 842




EDWARD 874



EDWARD 884

INFORMAZIONI TECNICHE / TECHNICAL INFORMATION

Composizione / composition	100% PL
Martindale / martindale	30.000 cicli/cycles
Pilling / Pilling	4

 **idrorepellente**
water repellent

MANUTENZIONE / MAINTENANCE

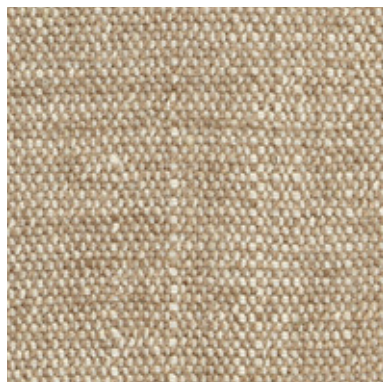


CAT. E

Easy care



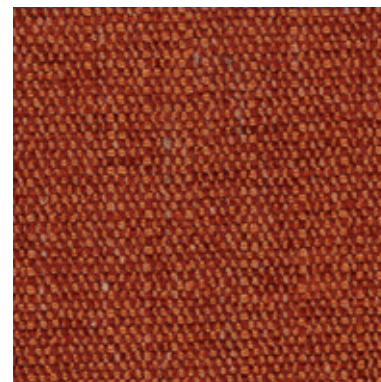
EASY CARE 001



EASY CARE 002



EASY CARE 003



EASY CARE 006



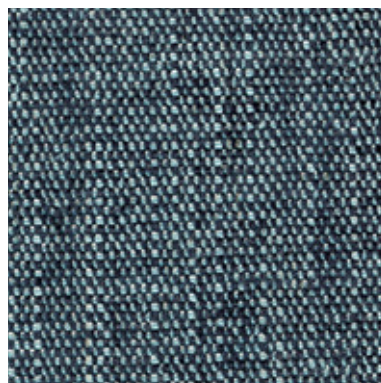
EASY CARE 007



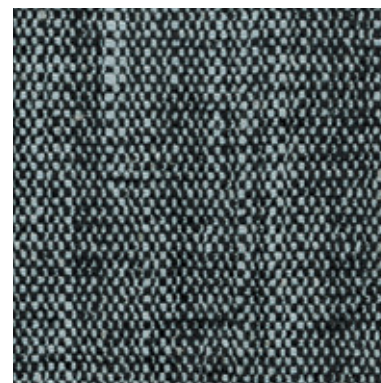
EASY CARE 008



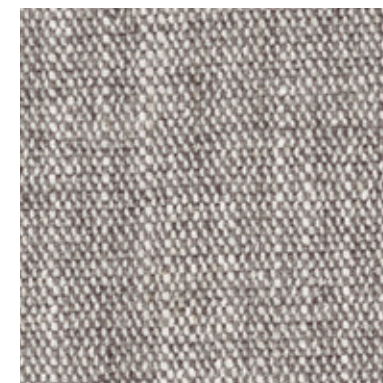
EASY CARE 010



EASY CARE 012




EASY CARE 013





EASY CARE 015

INFORMAZIONI TECNICHE / TECHNICAL INFORMATION

Composizione / composition	70% PL - 30% LI
Martindale / martindale	50.000 cicli/cycles
Pilling / Pilling	5

 **idrorepellente**
water repellent

 **irrestringibile**
non-shrink

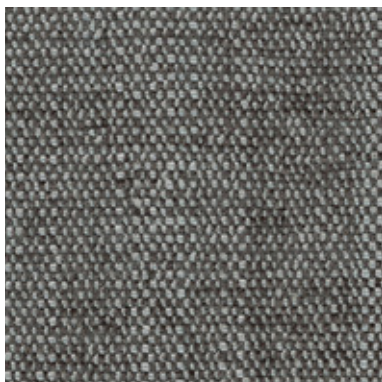
 **antimacchia**
stain resistant

MANUTENZIONE / MAINTENANCE



CAT. E

Easy care




EASY CARE 016




EASY CARE 017

INFORMAZIONI TECNICHE / TECHNICAL INFORMATION

Composizione / composition	70% PL - 30% LI
Martindale / martindale	50.000 cicli/cycles
Pilling / Pilling	5

 **idrorepellente**
water repellent

 **irrestringibile**
non-shrink

 **antimacchia**
stain resistant

MANUTENZIONE / MAINTENANCE



CAT. A

After



AFTER 011



AFTER 033



AFTER 043



AFTER 045



AFTER 060



AFTER 061



AFTER 063



AFTER 064




AFTER 076




AFTER 084

INFORMAZIONI TECNICHE / TECHNICAL INFORMATION

Composizione / composition	100% PL
Martindale / martindale	60.000 cicli/cycles
Pilling / Pilling	5

 **idrorepellente**
water repellent

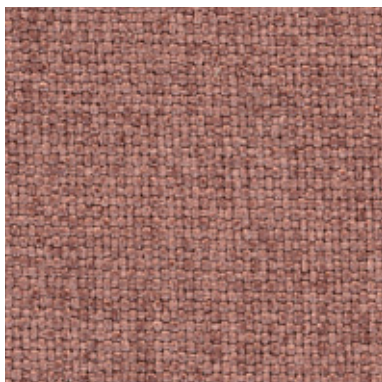
 **irrestringibile**
non-shrink

MANUTENZIONE / MAINTENANCE



CAT. A


After




AFTER 095

INFORMAZIONI TECNICHE / TECHNICAL INFORMATION

Composizione / composition	100% PL
Martindale / martindale	60.000 cicli/cycles
Pilling / Pilling	5

 **idrorepellente**
water repellent

 **irrestringibile**
non-shrink

MANUTENZIONE / MAINTENANCE

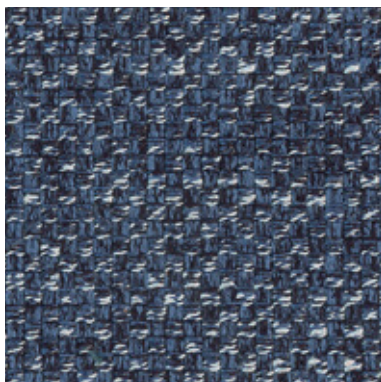


CAT. A

Adria



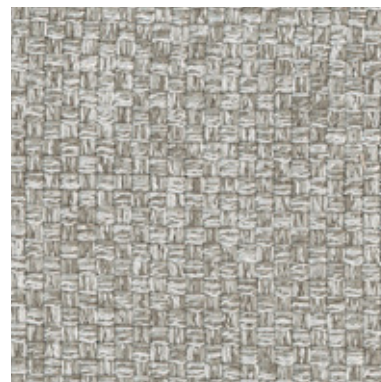
ADRIA 207



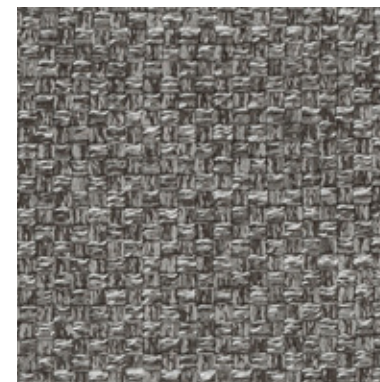
ADRIA 215



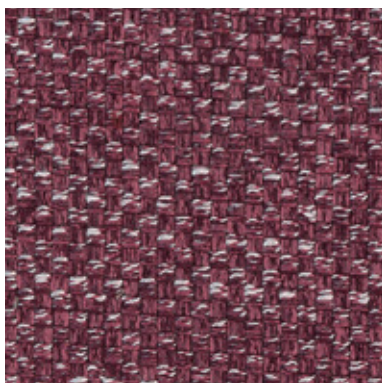
ADRIA 225



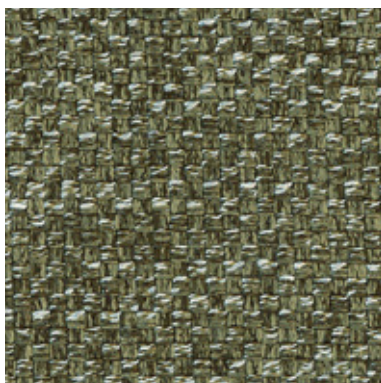
ADRIA 231



ADRIA 232



ADRIA 245



ADRIA 262




ADRIA 275



ADRIA 284

INFORMAZIONI TECNICHE / TECHNICAL INFORMATION

Composizione / composition	70% PL - 30% VI
Martindale / martindale	30.000 cicli/cycles
Pilling / Pilling	4

 **idrorepellente**
water repellent

MANUTENZIONE / MAINTENANCE



DITRE
ITALIA

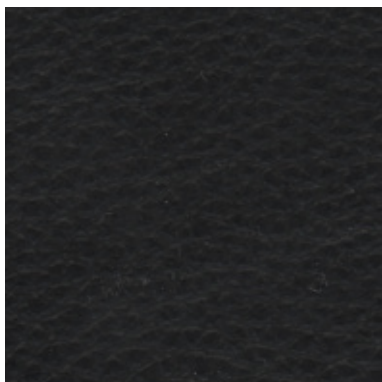
31016 Cordignano (Treviso) Zona Industriale Via del Lavoro, 21
Tel. +39.0438.9999 Fax +39.0438.999993 www.ditreitalia.it info@ditreitalia.it

Ditre Italia Products

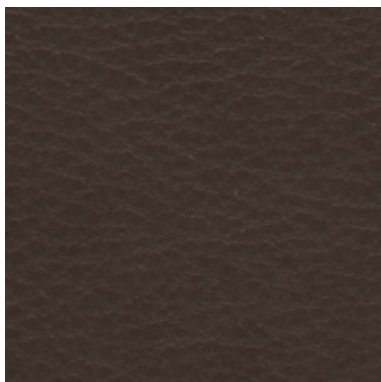
—

Pelle
Leathers

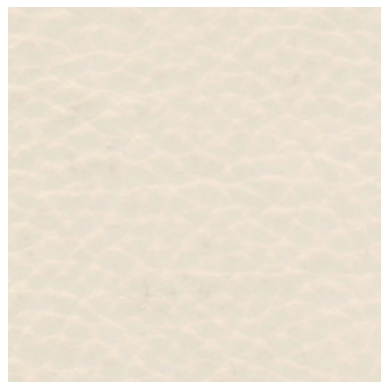
DITRE
italia



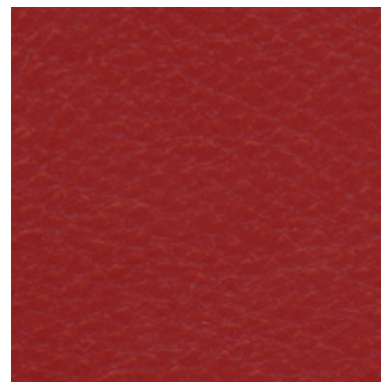
MELBOURNE 101



MELBOURNE 102



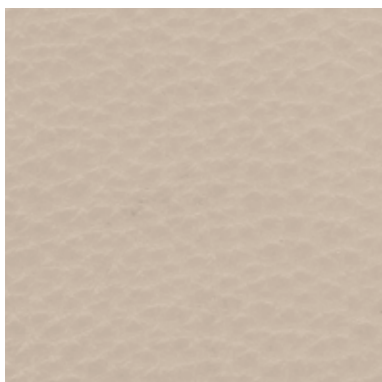
MELBOURNE 103



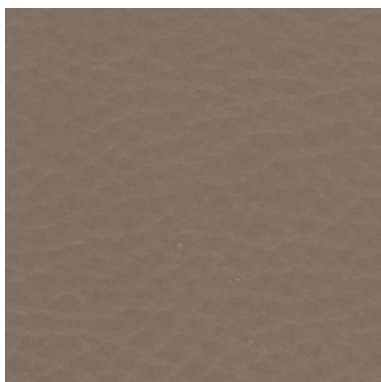
MELBOURNE 105



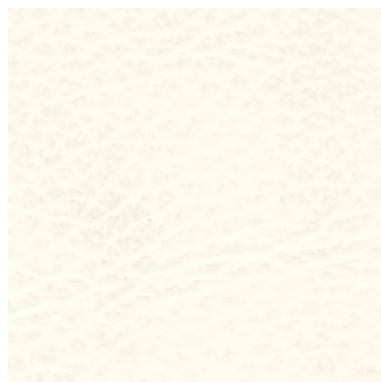
MELBOURNE 108



MELBOURNE 109



MELBOURNE 112



MELBOURNE 113



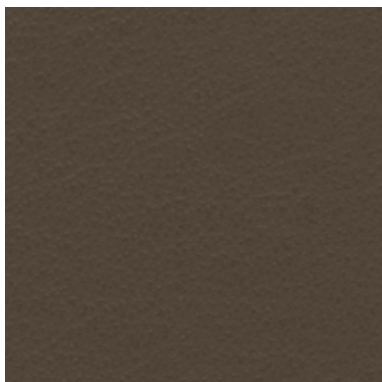
MELBOURNE 200

INFORMAZIONI TECNICHE / TECHNICAL INFORMATION

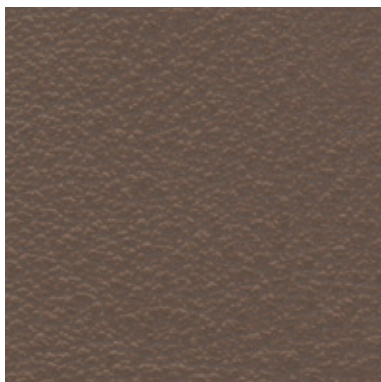
Tipologia / Type	fiore corretto/ full grain
Origine / origin	pelli bovine / cowhide
Provenienza / provenance	mondiale / worldwide
Concia / tanning	sali di cromo / chrome salt
Tintura / dye	in botte passante / in barrels
Spessore / thickness	1,3/1,5 mm

TEST FISICI / PHYSICAL TESTS

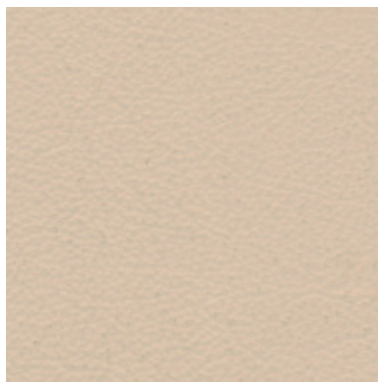
solidità del colore alla luce: 4/5 su 5	colour light fastness : 4/5 out of 5
solidità del colore allo strofinio a secco 500 cicli	colour fastness to the dry-rubbing 500 cycles
solidità del colore allo strofinio a umido 250 cicli	colour fastness to the wet-rubbing 250 cycles
solidità alla flessione 50.000 cicli	fastness to the bending 50.000 cycles



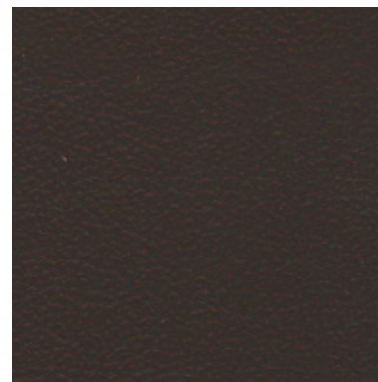
MILANO 510



MILANO 520



MILANO 530



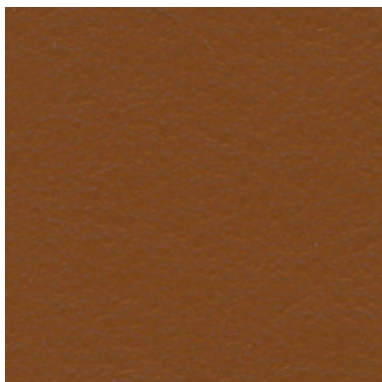
MILANO 550

INFORMAZIONI TECNICHE / TECHNICAL INFORMATION

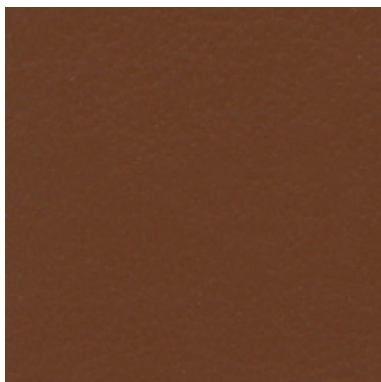
Tipologia / Type	mezzo fiore/ half grain
Origine / origin	pelli bovine / cowhide
Provenienza / provenance	europea / european
Concia / tanning	sali di cromo / chrome salt
Tintura / dye	in botte passante / in barrels
Spessore / thickness	0,9/1,1 mm

TEST FISICI / PHYSICAL TESTS

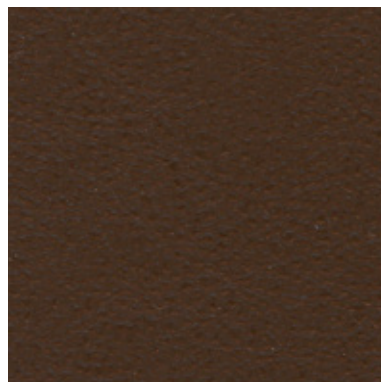
solidità del colore alla luce: 4/5 su 5	colour light fastness : 4/5 out of 5
solidità del colore allo strofinio a secco: 500 cicli	colour fastness to the dry-rubbing: 500 cycles
solidità del colore allo strofinio a umido: 250 cicli	colour fastness to the wet-rubbing: 250 cycles
solidità alla flessione: 25.000 cicli	fastness to the bending: 25.000 cycles



LISBONA 202



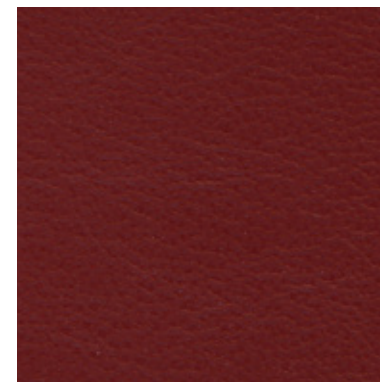
LISBONA 203



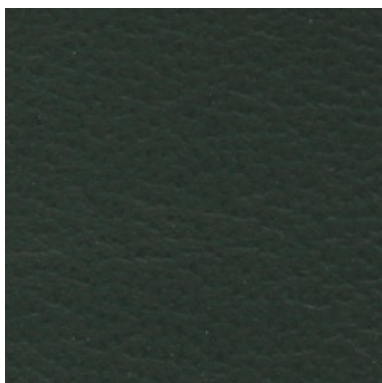
LISBONA 204



LISBONA 209



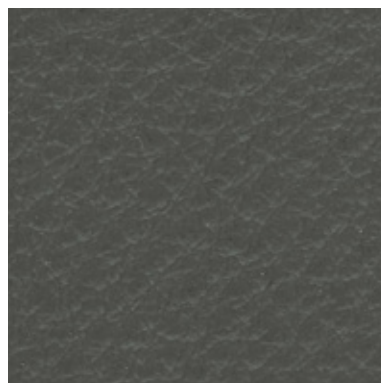
LISBONA 210



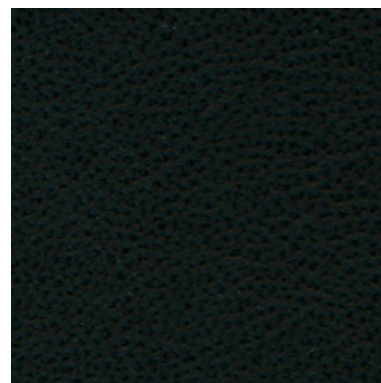
LISBONA 213



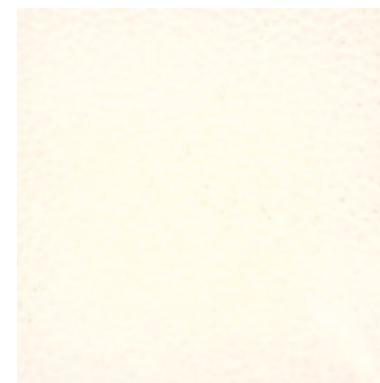
LISBONA 216



LISBONA 218



LISBONA 220



LISBONA 225

INFORMAZIONI TECNICHE / TECHNICAL INFORMATION

Tipologia / Type	fiore corretto/ full grain
Origine / origin	pelli bovine / cowhide
Provenienza / provenance	europea / european
Concia / tanning	sali di cromo / chrome salt
Tintura / dye	all'anilina / aniline dyed
Spessore / thickness	0,9/1 mm

TEST FISICI / PHYSICAL TESTS

solidità del colore alla luce: > 7	colour light fastness : > 7
solidità del colore allo strofinio a secco 500 cicli: >4/5	colour fastness to the dry-rubbing 500 cycles: >4/5
solidità del colore allo strofinio a umido 250 cicli: >4/5	colour fastness to the wet-rubbing 250 cycles: >4/5
solidità alla flessione >50.000 cicli	fastness to the bending >50.000 cycles



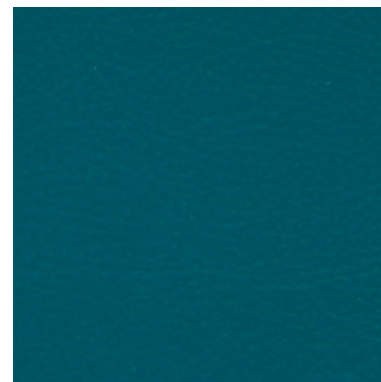
LISBONA 229



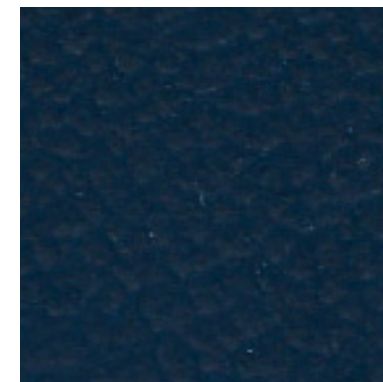
LISBONA 232



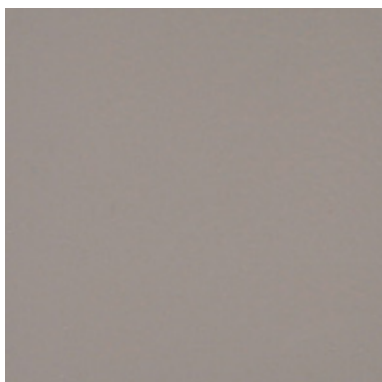
LISBONA 233



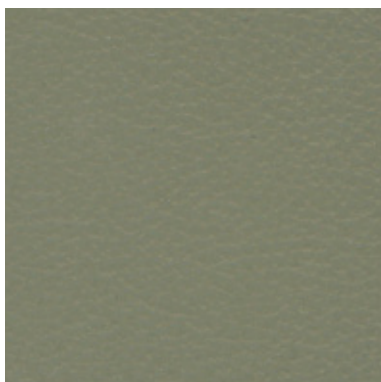
LISBONA 238



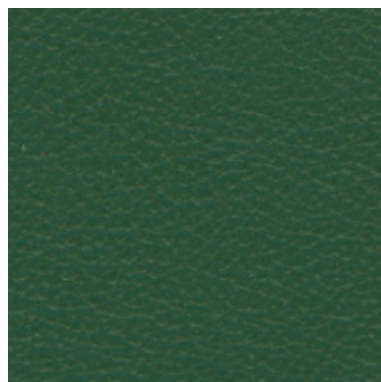
LISBONA 239



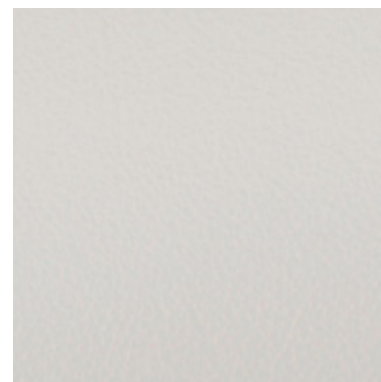
LISBONA 240



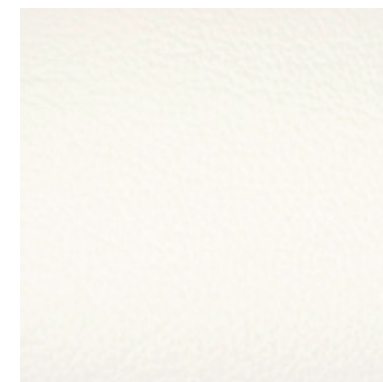
LISBONA 241



LISBONA 242



LISBONA 249



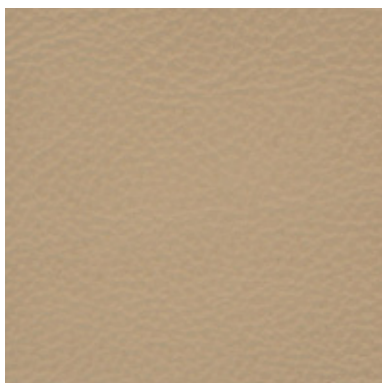
LISBONA 259

INFORMAZIONI TECNICHE / TECHNICAL INFORMATION

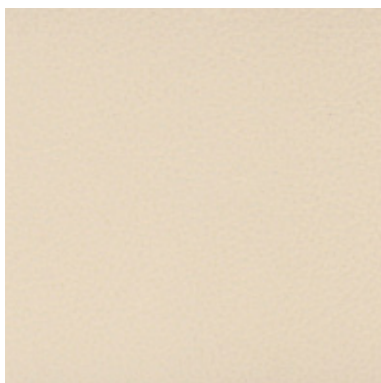
Tipologia / Type	fiore corretto/ full grain
Origine / origin	pelli bovine / cowhide
Provenienza / provenance	europea / european
Concia / tanning	sali di cromo / chrome salt
Tintura / dye	all'anilina / aniline dyed
Spessore / thickness	0,9/1 mm

TEST FISICI / PHYSICAL TESTS

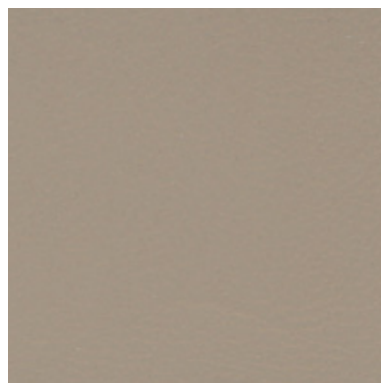
solidità del colore alla luce: > 7	colour light fastness : > 7
solidità del colore allo strofinio a secco 500 cicli: >4/5	colour fastness to the dry-rubbing 500 cycles: >4/5
solidità del colore allo strofinio a umido 250 cicli: >4/5	colour fastness to the wet-rubbing 250 cycles: >4/5
solidità alla flessione >50.000 cicli	fastness to the bending >50.000 cycles



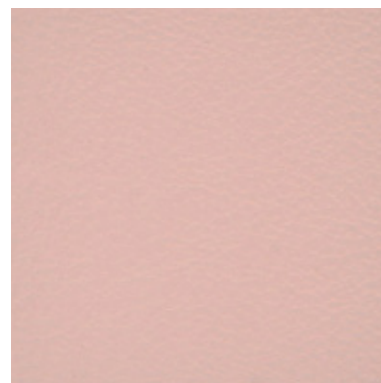
LISBONA 266



LISBONA 267



LISBONA 268



LISBONA 278

INFORMAZIONI TECNICHE / TECHNICAL INFORMATION

Tipologia / Type	fiore corretto/ full grain
Origine / origin	pelli bovine / cowhide
Provenienza / provenance	europea / european
Concia / tanning	sali di cromo / chrome salt
Tintura / dye	all'anilina / aniline dyed
Spessore / thickness	0,9/1 mm

TEST FISICI / PHYSICAL TESTS

solidità del colore alla luce: > 7	colour light fastness : > 7
solidità del colore allo strofinio a secco 500 cicli: >4/5	colour fastness to the dry-rubbing 500 cycles: >4/5
solidità del colore allo strofinio a umido 250 cicli: >4/5	colour fastness to the wet-rubbing 250 cycles: >4/5
solidità alla flessione >50.000 cicli	fastness to the bending >50.000 cycles



PAUL 001



PAUL 002



PAUL 003



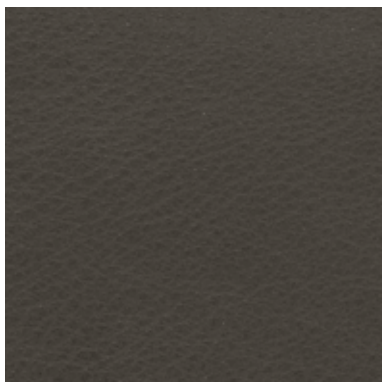
PAUL 004

INFORMAZIONI TECNICHE / TECHNICAL INFORMATION

Tipologia / Type	pieno fiore/ full grain
Origine / origin	pelli bovine / cowhide
Provenienza / provenance	europea / european
Concia / tanning	sali di cromo / chrome salt
Tintura / dye	all'anilina passante in botte sotto vuoto / aniline through
Spessore / thickness	0,9/1,1 mm

TEST FISICI / PHYSICAL TESTS

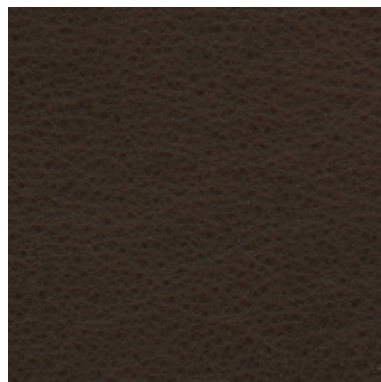
solidità del colore alla luce: 4/5	colour light fastness : 4/5
solidità del colore allo strofinio a secco: 500 cicli	colour fastness to the dry-rubbing: 500 cycles
solidità del colore allo strofinio a umido: 80 cicli	colour fastness to the wet-rubbing: 80 cycles



PISA 001



PISA 002



PISA 003



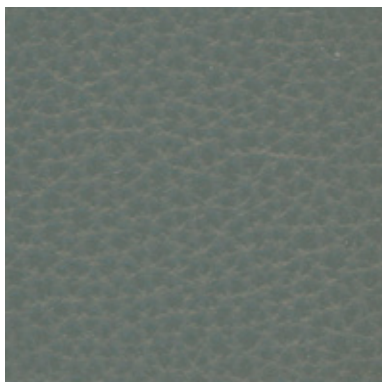
PISA 004

INFORMAZIONI TECNICHE / TECHNICAL INFORMATION

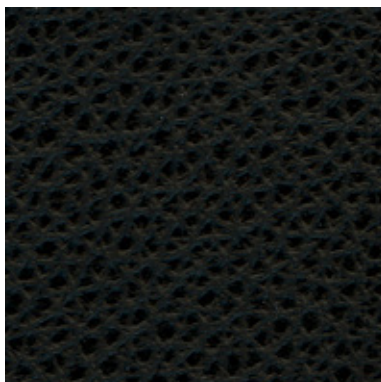
Tipologia / Type	pieno fiore / full grain
Origine / origin	pelli bovine / cowhide
Provenienza / provenance	europea / european
Concia / tanning	sali di cromo / chrome salt
Tintura / dye	in botte con anilina / in barrels
Spessore / thickness	1,0/1,2 mm

TEST FISICI / PHYSICAL TESTS

solidità del colore alla luce: 3	colour light fastness : 3
solidità del colore allo strofinio a secco: 50 cicli	colour fastness to the dry-rubbing: 50 cycles
solidità del colore allo strofinio a umido: 20 cicli	colour fastness to the wet-rubbing: 20 cycles



POLAR 204



POLAR 207



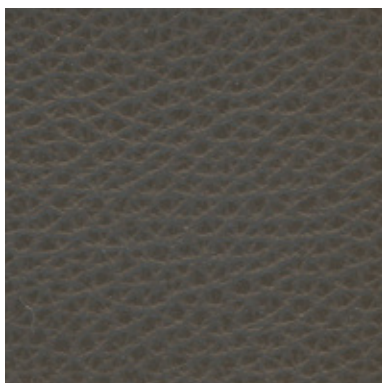
POLAR 208



POLAR 209



POLAR 210



POLAR 211



POLAR 212



POLAR 214



POLAR 216



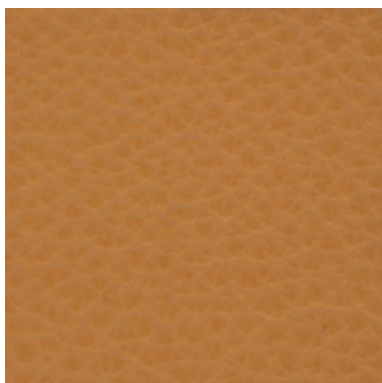
POLAR 217

INFORMAZIONI TECNICHE / TECHNICAL INFORMATION

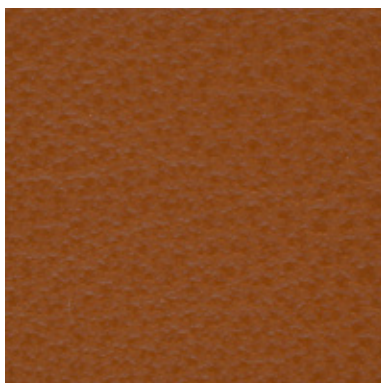
Tipologia / Type	fiore corretto/ full grain
Origine / origin	pelli bovine / cowhide
Provenienza / provenance	mondiale / worldwide
Concia / tanning	sali di cromo / chrome salt
Tintura / dye	in botte passante / in barrels
Spessore / thickness	1,2/1,4 mm

TEST FISICI / PHYSICAL TESTS

solidità del colore alla luce: 5	colour light fastness : 5
solidità del colore allo strofinio a secco 500 cicli: >4	colour fastness to the dry-rubbing 500 cycles: >4
solidità del colore allo strofinio a umido 250 cicli: >4	colour fastness to the wet-rubbing 250 cycles: >4
solidità alla flessione 50.000 cicli: nessun danno	fastness to the bending 50.000: cycles no damage



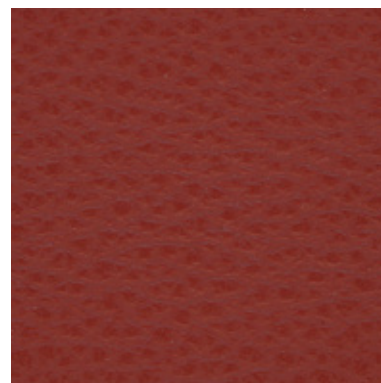
POLAR 218



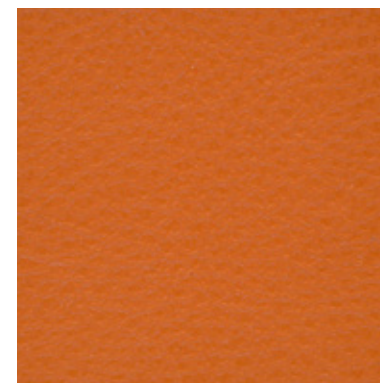
POLAR 223



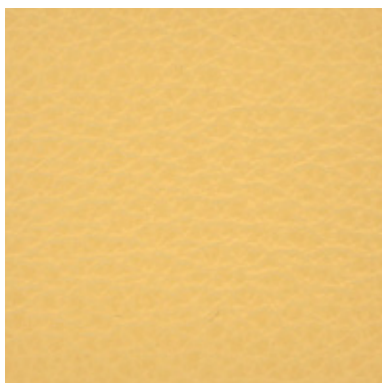
POLAR 225



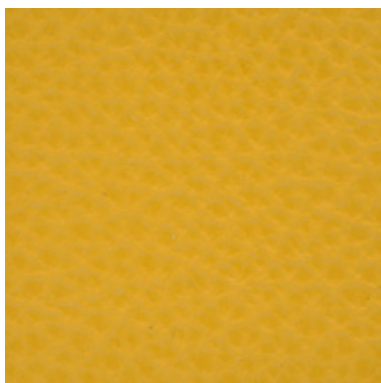
POLAR 233



POLAR 246



POLAR 249



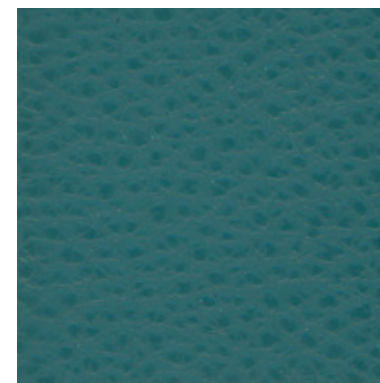
POLAR 251



POLAR 257



POLAR 264



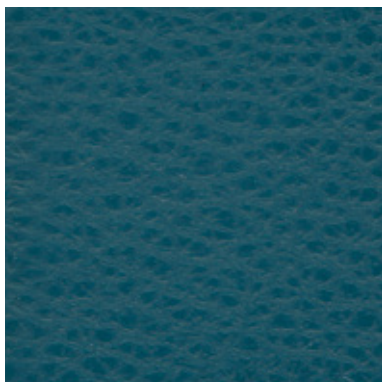
POLAR 266

INFORMAZIONI TECNICHE / TECHNICAL INFORMATION

Tipologia / Type	fiore corretto/ full grain
Origine / origin	pelli bovine / cowhide
Provenienza / provenance	mondiale / worldwide
Concia / tanning	sali di cromo / chrome salt
Tintura / dye	in botte passante / in barrels
Spessore / thickness	1,2/1,4 mm

TEST FISICI / PHYSICAL TESTS

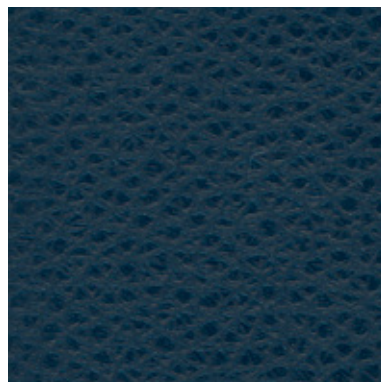
solidità del colore alla luce: 5	colour light fastness : 5
solidità del colore allo strofinio a secco 500 cicli: >4	colour fastness to the dry-rubbing 500 cycles: >4
solidità del colore allo strofinio a umido 250 cicli: >4	colour fastness to the wet-rubbing 250 cycles: >4
solidità alla flessione 50.000 cicli: nessun danno	fastness to the bending 50.000: cycles no damage



POLAR 270



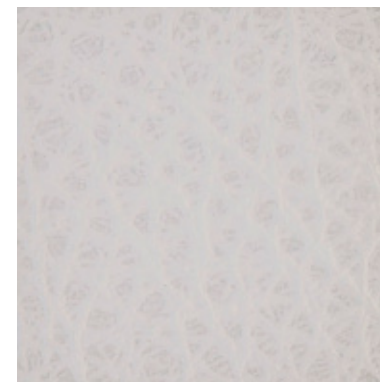
POLAR 271



POLAR 275



POLAR 277



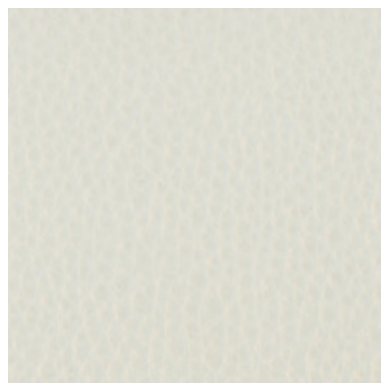
POLAR 280



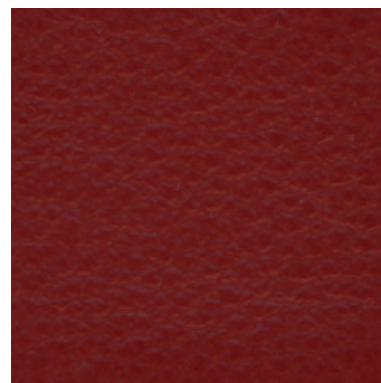
POLAR 281



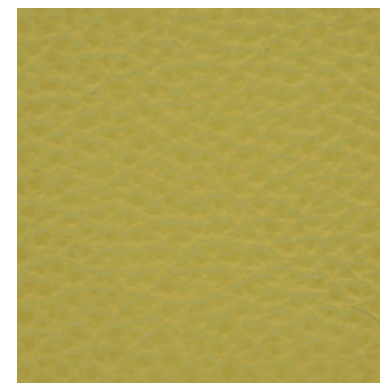
POLAR 284



POLAR 286



POLAR 288



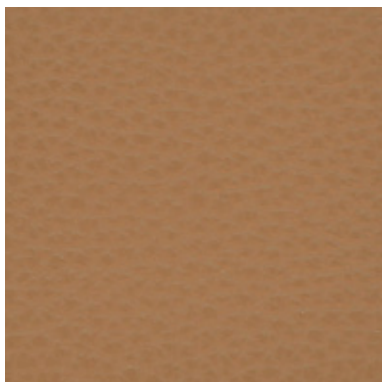
POLAR 294

INFORMAZIONI TECNICHE / TECHNICAL INFORMATION

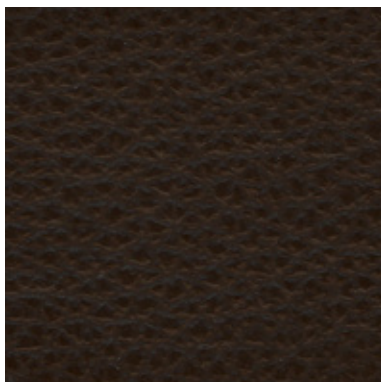
Tipologia / Type	fiore corretto/ full grain
Origine / origin	pelli bovine / cowhide
Provenienza / provenance	mondiale / worldwide
Concia / tanning	sali di cromo / chrome salt
Tintura / dye	in botte passante / in barrels
Spessore / thickness	1,2/1,4 mm

TEST FISICI / PHYSICAL TESTS

solidità del colore alla luce: 5	colour light fastness : 5
solidità del colore allo strofinio a secco 500 cicli: >4	colour fastness to the dry-rubbing 500 cycles: >4
solidità del colore allo strofinio a umido 250 cicli: >4	colour fastness to the wet-rubbing 250 cycles: >4
solidità alla flessione 50.000 cicli: nessun danno	fastness to the bending 50.000: cycles no damage



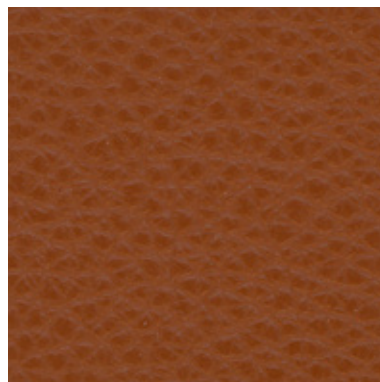
POLAR 295



POLAR 298



POLAR 304



POLAR 398



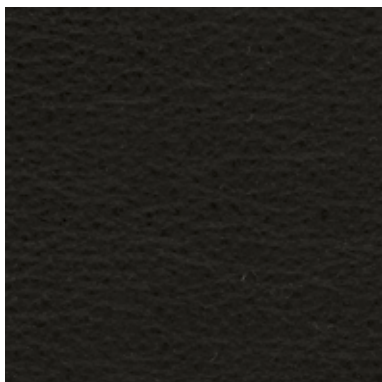
POLAR 399

INFORMAZIONI TECNICHE / TECHNICAL INFORMATION

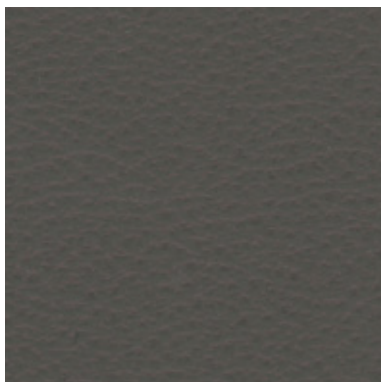
Tipologia / Type	fiore corretto/ full grain
Origine / origin	pelli bovine / cowhide
Provenienza / provenance	mondiale / worldwide
Concia / tanning	sali di cromo / chrome salt
Tintura / dye	in botte passante / in barrels
Spessore / thickness	1,2/1,4 mm

TEST FISICI / PHYSICAL TESTS

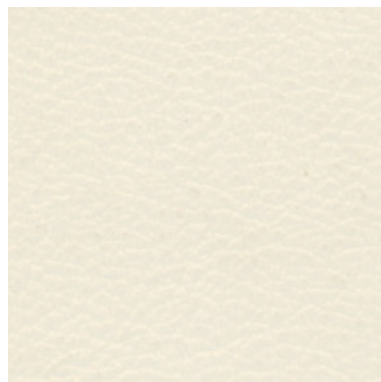
solidità del colore alla luce: 5	colour light fastness : 5
solidità del colore allo strofinio a secco 500 cicli: >4	colour fastness to the dry-rubbing 500 cycles: >4
solidità del colore allo strofinio a umido 250 cicli: >4	colour fastness to the wet-rubbing 250 cycles: >4
solidità alla flessione 50.000 cicli: nessun danno	fastness to the bending 50.000: cycles no damage



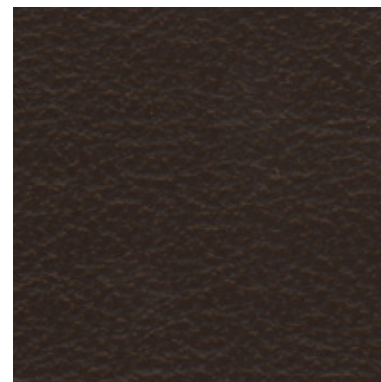
SIDNEY 80



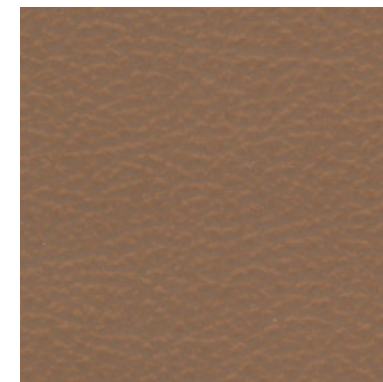
SIDNEY 201



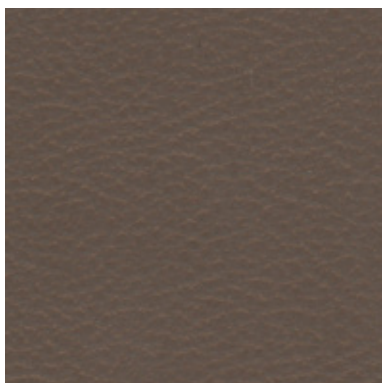
SIDNEY 415



SIDNEY 696



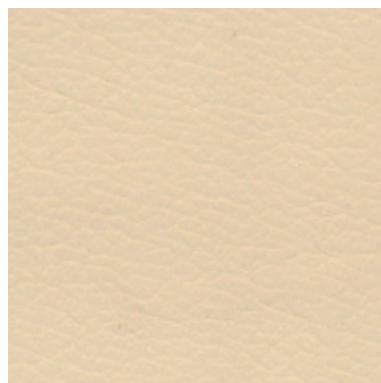
SIDNEY 700



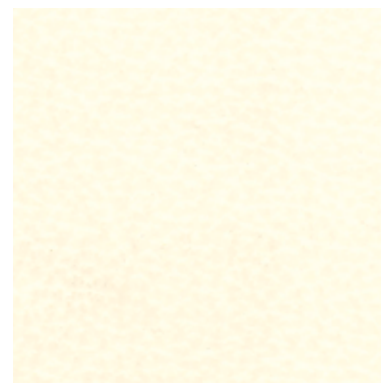
SIDNEY 701



SIDNEY 702



SIDNEY 817



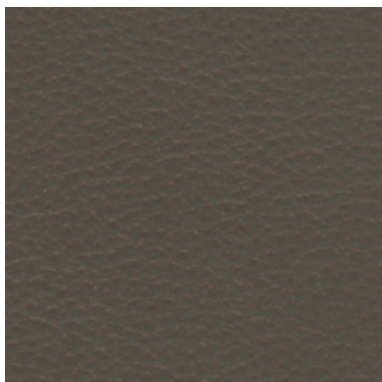
SIDNEY 2000

INFORMAZIONI TECNICHE / TECHNICAL INFORMATION

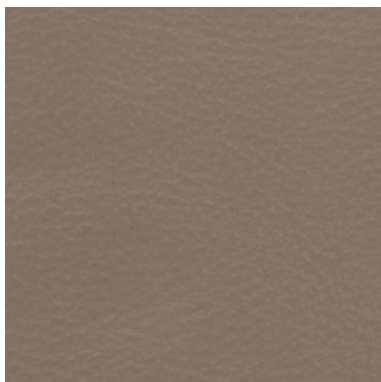
Tipologia / Type	mezzo fiore/ half grain
Origine / origin	pelli bovine / cowhide
Provenienza / provenance	mondiale / worldwide
Concia / tanning	sali di cromo / chrome salt
Tintura / dye	in botte passante / in barrels
Spessore / thickness	0,9/1,1 mm

TEST FISICI / PHYSICAL TESTS

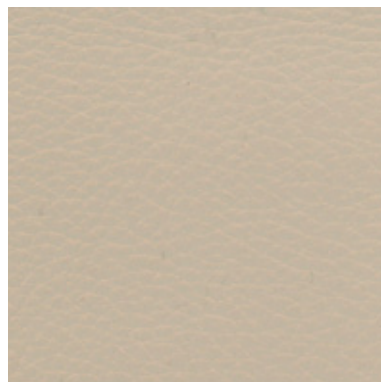
solidità del colore alla luce: 4/5 su 5	colour light fastness : 4/5 out of 5
solidità del colore allo strofinio a secco: 500 cicli	colour fastness to the dry-rubbing: 500 cycles
solidità del colore allo strofinio a umido: 250 cicli	colour fastness to the wet-rubbing: 250 cycles
solidità alla flessione: 50.000 cicli	fastness to the bending: 50.000



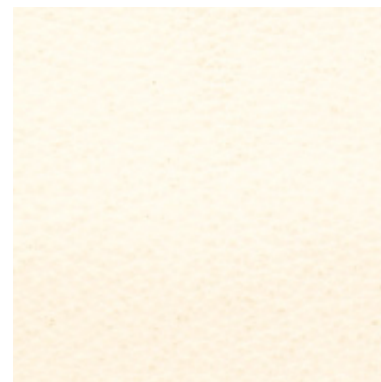
TOKIO 401



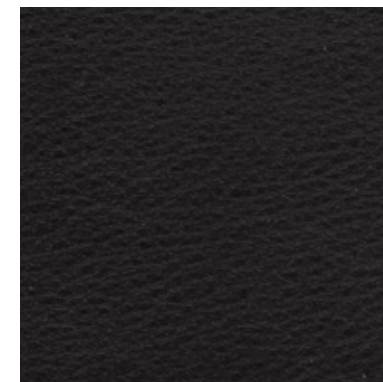
TOKIO 404



TOKIO 406



TOKIO 409



TOKIO 451



TOKIO 500

INFORMAZIONI TECNICHE / TECHNICAL INFORMATION

Tipologia / Type	fiore corretto / half grain
Origine / origin	pelli bovine / cowhide
Provenienza / provenance	mondiale / worldwide
Concia / tanning	sali di cromo / chrome salt
Tintura / dye	in botte passante / in barrels
Spessore / thickness	1,2/1,3 mm

TEST FISICI / PHYSICAL TESTS

solidità del colore alla luce: 5	colour light fastness : 5
solidità del colore allo strofinio a secco: 500 cicli	colour fastness to the dry-rubbing: 500 cycles
solidità del colore allo strofinio a umido: 250 cicli	colour fastness to the wet-rubbing: 250 cycles



VOGUE 401



VOGUE 402



VOGUE 403



VOGUE 404



VOGUE 407



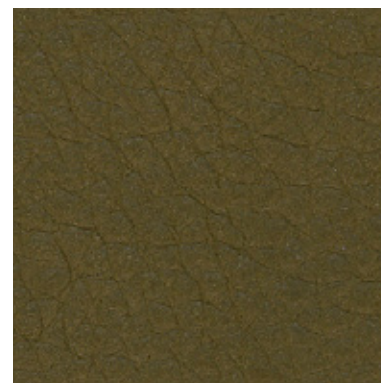
VOGUE 409



VOGUE 410



VOGUE 412



VOGUE 418



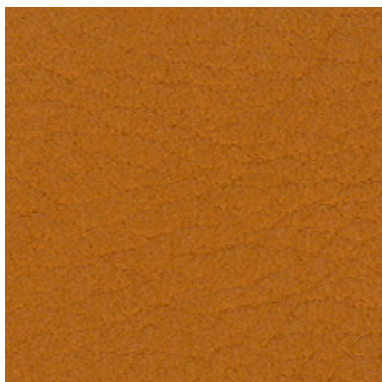
VOGUE 421

INFORMAZIONI TECNICHE / TECHNICAL INFORMATION

Tipologia / Type	pieno fiore/ full grain
Origine / origin	pelli bovine / cowhide
Provenienza / provenance	europa / european
Concia / tanning	sali di cromo / chrome salt
Tintura / dye	anilina passante in botte sottovuoto /aniline drum dyeing
Spessore / thickness	1,3/1,5 mm

TEST FISICI / PHYSICAL TESTS

solidità del colore alla luce: >2/3 scala blusolidità del	colour light fastness : 4/5 out of 5
colore allo strofinio a secco 50 cicli: >3 scala grigi	colour fastness to the 50 dry-rubbing: 2/3 grey scale
solidità del colore allo strofinio a umido 20 cicli:	colour fastness to the 20 wet-rubbing: >2/3 grey scale
>2/3 scala grigi	



VOGUE 422



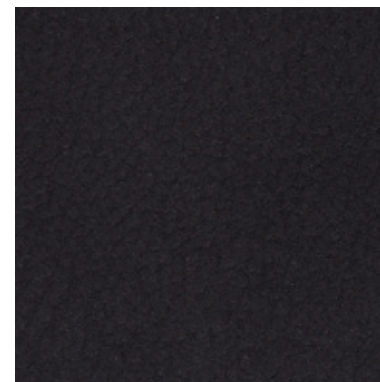
VOGUE 423



VOGUE 424



VOGUE 425



VOGUE 426

INFORMAZIONI TECNICHE / TECHNICAL INFORMATION

Tipologia / Type	pieno fiore/ full grain
Origine / origin	pelli bovine / cowhide
Provenienza / provenance	europa / european
Concia / tanning	sali di cromo / chrome salt
Tintura / dye	anilina passante in botte sottovuoto /aniline drum dyeing
Spessore / thickness	1,3/1,5 mm

TEST FISICI / PHYSICAL TESTS

solidità del colore alla luce: >2/3 scala blusolidità del	colour light fastness : 4/5 out of 5
colore allo strofinio a secco 50 cicli: >3 scala grigi	colour fastness to the 50 dry-rubbing: 2/3 grey scale
solidità del colore allo strofinio a umido 20 cicli:	colour fastness to the 20 wet-rubbing: >2/3 grey scale
>2/3 scala grigi	

**DITRE
italia**

31016 Cordignano (Treviso) Zona Industriale Via del Lavoro, 21
Tel. +39.0438.9999 Fax +39.0438.999993 www.ditreitalia.it info@ditreitalia.it

Finiture

finishing

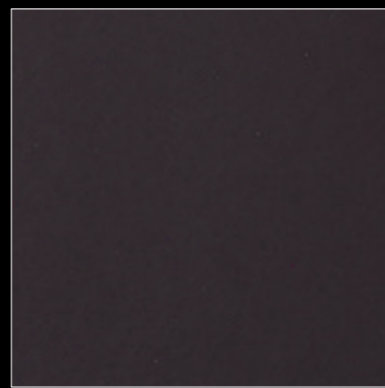
DITRE
italia

finiture metalliche

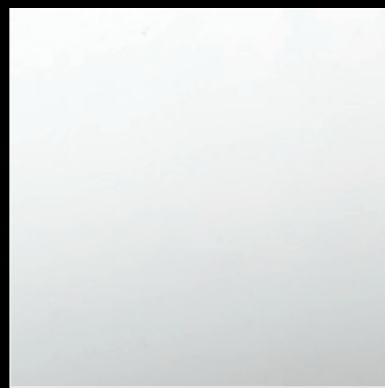
Metallic finishes - Metallausführungen - finitions métalliques



ME01 ANTRACITE



ME03 TESTA DI MORO



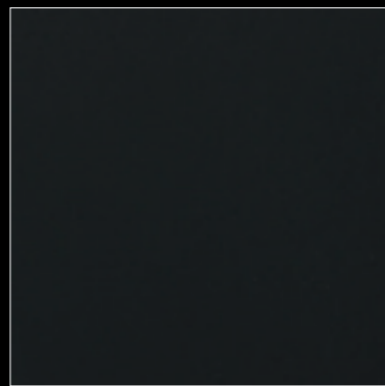
ME04 CROMO LUCIDO



ME05 CROMO NERO



ME07 BRONZATO



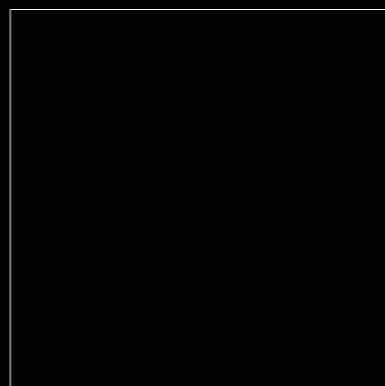
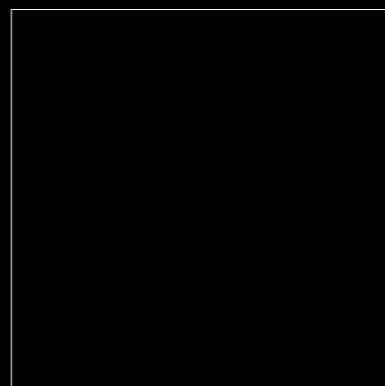
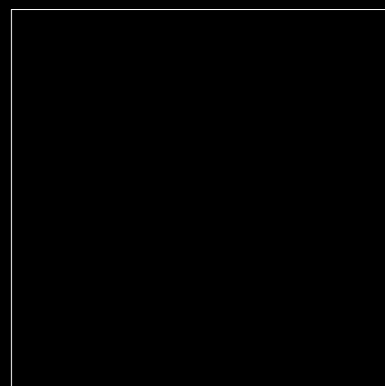
ME09 NERO



ME10 GOLD

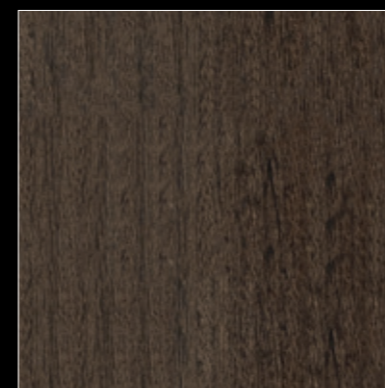


ME11 LIGHT BROWN



legni

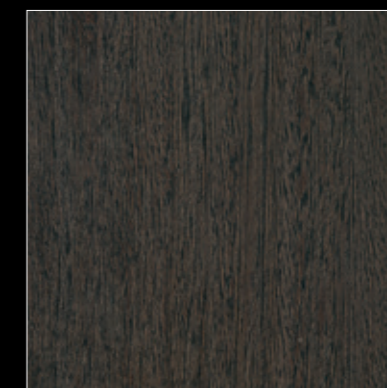
Woods - Holz - bois



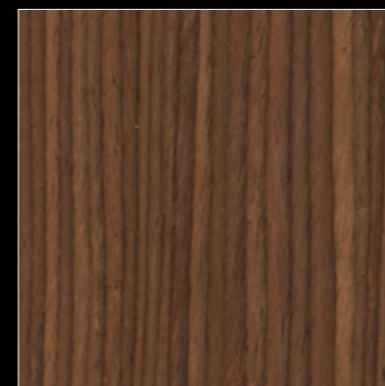
LE05 EUCALIPTO



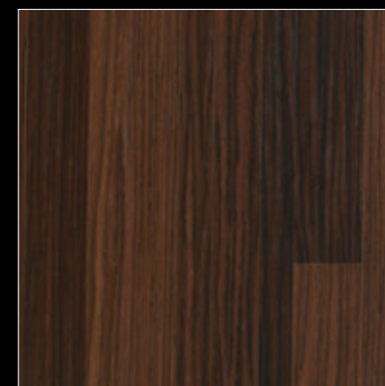
LE11 SMOKY VELVET



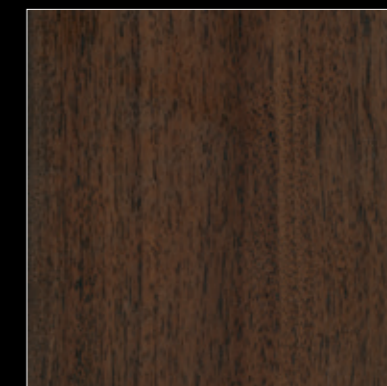
LE12 GREY WOOD



LE16 NOCE CHOCOLATE



LE17 NOCE INTARSIO



LE18 NOCE CANALETTO

cuoio

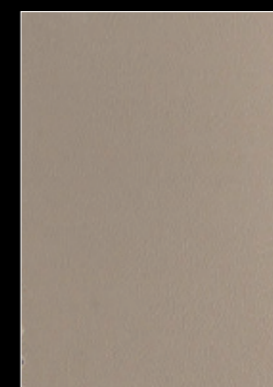
leather - Leder - cuir



CR01 NATURALE



CR02 MARRONE



CR03 TORTORA



CR05 GRIGIO



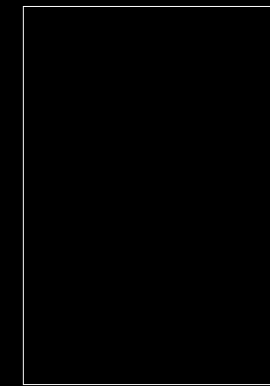
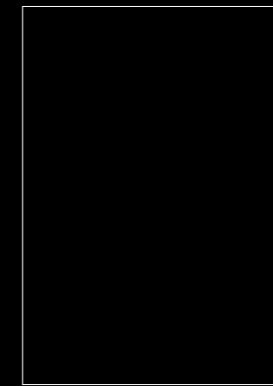
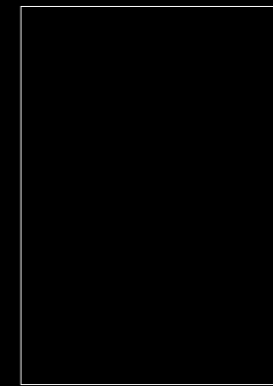
CR07 GESSO



CR08 TESTA DI MORO



CR10 CANAPA



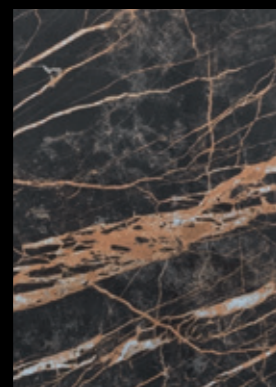
Nella stampa su carta la tonalità dei colori non può essere riprodotta fedelmente. Ditre Italia srl si riserva la facoltà di apportare modifiche in qualsiasi momento e senza preavviso. Shades of colour cannot be reproduced exactly on printed paper. Ditre Italia srl is entitled to make modifications at any time and without prior notice. Aus drucktechnischen Gründen können die Farben am Papier nicht naturgetreu wiedergegeben werden. Ditre Italia srl behält sich das Recht vor, jederzeit und ohne Vorankündigung Änderungen am Produkt vornehmen zu können. Les coloris imprimés peuvent être différents de la réalité. Ditre Italia srl se réserve le droit d'apporter toute modification à tout moment et sans préavis.

gres - cemento

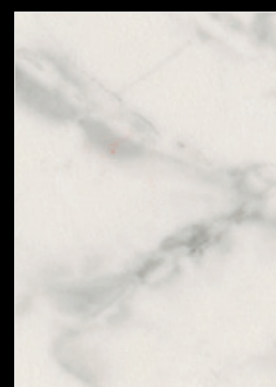
stoneware - Steingut - grès - cement - Zement - béton



MA03 CALACATTA



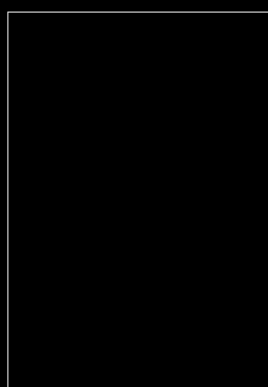
MA07 NOIR DESIRE



MA12 INVISIBLE WHITE



MA13 PORFIDO MARRONE



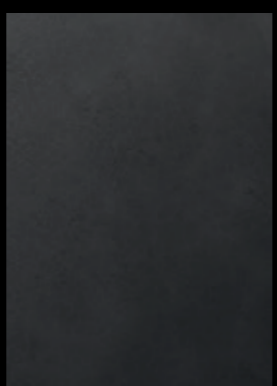
CM01 CEMENTO NATURALE



CM02 CEMENTO ANTRACITE



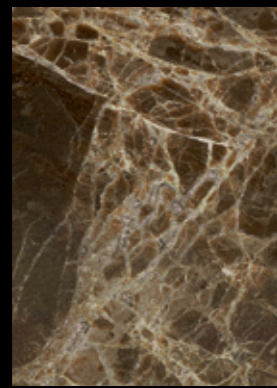
CM03 CEMENTO BIANCO GESSO



CM04 CEMENTO NERO GRAFITE

marmi

Marbles - Marmor - marbres



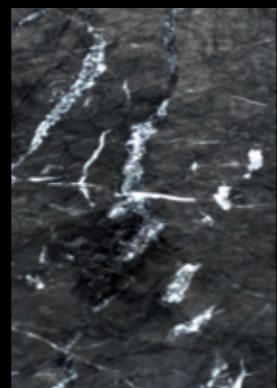
MA01 DARK EMPERADOR



MA02 CARRARA BIANCO



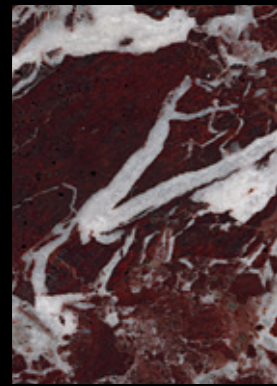
MA06 NERO MARQUINA



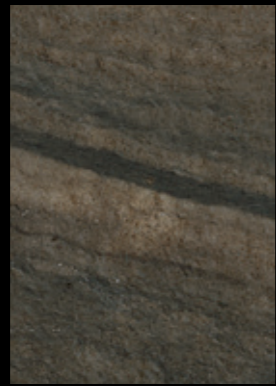
MA08 GRIGIO CARNICO



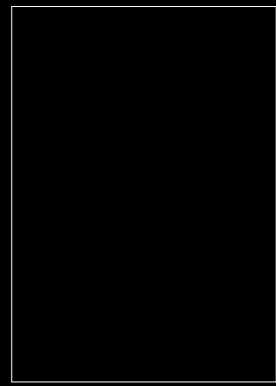
MA09 SPIDERMAN



MA 10 ROSSO LEVANTO



MA 11 SEQUOIA BROWN



MA03 CALACATTA

MA07 NOIR DESIRE

MA12 INVISIBLE WHITE

MA13 PORFIDO MARRONE

CM01 CEMENTO NATURALE

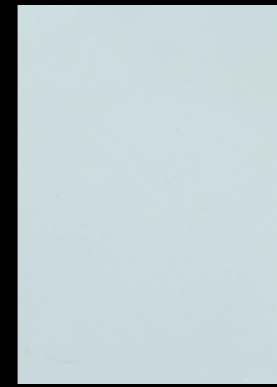
CM02 CEMENTO ANTRACITE

CM03 CEMENTO BIANCO GESSO

CM04 CEMENTO NERO GRAFITE

vetri

Glasses - Glas - verres



VE01 TRASPARENTE



VE02 BRONZATO



VE04 SATINATO



VE05 FUMÈ



VE06 ROSA CIPRIA*



VE07 ARANCIO*



VE08 VIOLA*



VE09 AZZURRO*



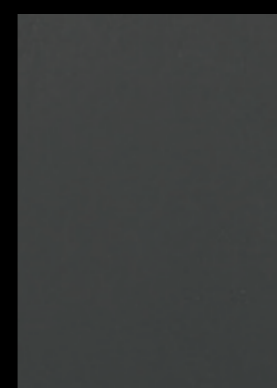
VE10 VERDE OLIVA*



VE 11 VETRO MILLERIGHE FUMÈ

finiture laccate

Lacquered finishes - Lackierte Ausführungen - finitions laquées



LE01 ANTRACITE



LE02 GESSO



LE03 TESTA DI MORO



LE10 GRIGIO SETA



LE14 BIANCO OPACO



LE15 ROSSO OPACO

* Vetro stratificato trasparente. Transparent laminated glass. Transparentes Verbundglas. Verre feuilleté transparent

Nella stampa su carta la tonalità dei colori non può essere riprodotta fedelmente. Ditre Italia srl si riserva la facoltà di apportare modifiche in qualsiasi momento e senza preavviso. Shades of colour cannot be reproduced exactly on printed paper. Ditre Italia srl is entitled to make modifications at any time and without prior notice. Aus drucktechnischen Gründen können die Farben am Papier nicht naturgetreu wiedergegeben werden. Ditre Italia srl behält sich das Recht vor, jederzeit und ohne Vorankündigung Änderungen am Produkt vornehmen zu können. Les coloris imprimés peuvent être différents de la réalité. Ditre Italia srl se réserve le droit d'apporter toute modification à tout moment et sans préavis.

DITRE
italia

31016 Cordignano (Treviso) Zona Industriale Via del Lavoro, 21
Tel. +39.0438.9999 Fax +39.0438.999993 www.ditreitalia.it info@ditreitalia.it